



ROVOS RAIL

JOURNEY
INFORMATION

Golf Safari



SouthAfrica•**To**
Travel Online

The Most Luxurious Train in the World



ITINERARY

GOLF SAFARI 9 NIGHTS · 2100km

BOTSWANA

Pilanesberg
 Sun City
Game Drive
Lost City/Gary Player

Dullstroom
Town Visit
 PRETORIA
Highland Gate
 Mbabane Johannesburg

ESWATINI



LESOTHO *City Tour & Botanical Gardens Visit Durban/Mt Edgecombe/Cotswold*

Downs

LEISURE GUESTS	GOLFERS
DAY 1: PRETORIA	

<p>12:00 Depart Rovos Rail Station, Pretoria. Guests may freshen up in their suites before meeting fellow passengers in the lounge car and observation car. 13:00 Lunch is served in the dining cars en route to Rustenburg. 16:30 Tea in the lounge and observation cars. 19:30 Dinner is served in the dining cars. <i>Dress: Formal</i></p> <p>The old town of Rustenburg grew as the church and administrative centre for a rich farming area. It is here, in the centre of a volcanic valley surrounded by the dun slopes of the Pilanesberg Mountains, a wilderness wonderland rises from the dust, the fantastical Sun City Resort. It was a vision realised through one man's unshakable faith in the religion of tourism, the South African hotel prodigy Sol Kerzner. It was officially opened on 7 December 1979 in what was then Bophuthatswana, which had been declared as an independent state by the apartheid government. This meant it could provide entertainment such as gambling, which was banned in South Africa. The UN had imposed a cultural boycott on South Africa in condemnation of apartheid. In the early 80s, several acts disregarded the boycott and performed (with substantial financial incentives from Kerzner) to desegregated crowds at the venue, such as the Beach Boys, Cher, Liza Minnelli, Frank Sinatra, Status Quo, Rod Stewart, Elton John and Queen. Today the resort is one of the world's largest entertainment centres, a luxury theme park for grownup kids. The two championship golf courses – one with crocodiles at the 13th hole – are bordered by the Pilanesberg National Park, which contains the Big Five and has a vigorous conservation programme.</p>			
DAY 2: PILANESBERG		GARY PLAYER/LOST CITY	
06:00	Breakfast is served in the dining cars.	06:00	Breakfast is served until departure.
07:45	Transfer (±60 min) to Sun City.		Transfer (±60 min) to Sun City's Gary Player/ Lost City Golf Course for tee off and lunch.
09:00	Game drive in the Pilanesberg Reserve .		Enjoy an afternoon of golfing and leisure.
12:00	Lunch with the Rovos golfers . Afternoon at leisure at Lost City's Sun City .	17:30	Return to the train.
17:30	Return to the train.	20:00	Dinner is served in the dining cars en route to Heidelberg. <i>Dress: Formal</i>
20:00	Dinner is served in the dining cars. <i>Dress: Formal</i>		
DAY 3: AT LEISURE ON BOARD			
Day at leisure. All meals enjoyed on board en route to Ladysmith. <i>Dress: "Africa" Theme or Smart Casual</i> The train climbs to Majuba Hill – site of the decisive battle that ended the First Anglo Boer War – then passes Newcastle, which has what is reputed to be the largest cella-dome Hindu temple in the southern hemisphere, and Glencoe, site of the first battle of the Anglo Boer War and now the centre of the province's coalfields.			

UPDATED 20 OCTOBER 2023

DAY 4: SPIONKOP		CHAMPAGNE SPORTS	
06:00	Breakfast is served in the dining cars.	06:00	Breakfast is served in the dining cars until departure. Transfer (±60 min) to Champagne Sports Resort for tee off and lunch.
09:00	Transfer (±30 min) to Spionkop Lodge to hear the historic tale of the Battle of Spionkop with lunch.	17:00	Return to the train.
14:00	Afternoon game drive in the 11 000-acre reserve <u>OR</u> relax at the lodge. Return to the train at 16:00.	19:30	Dinner is served. Shortly after Chieveley, on the right of the track, stands a memorial to Churchill who was captured here in 1899. <i>Dress: Formal</i>
16:30	Tea in the lounge and observation cars.		
19:30	Dinner is served in the dining cars. <i>Dress: Formal</i>		
DAY 5: DURBAN		DURBAN/EDGECOMBE/COTSWOLD	
06:00	Breakfast is served in the dining cars.	05:30	Continental breakfast is served until departure.
09:00	Enjoy a Durban city tour, a visit to the botanical gardens and lunch at Umhlanga's beachfront with an afternoon at leisure.		Transfer to Durban Country Club (±15 min) <u>OR</u> Mt Edgecombe (±20 min) <u>OR</u> Cotswold Downs (±30 min) for tee off and lunch.
16:30	Tea in the lounge and observation cars.	16:30	Tea in the lounge and observation cars.
19:30	Dinner is served in the dining cars. <i>Dress: Formal</i> Please ensure that the Train Manager or Admin Deputy is in possession of your passport.	19:30	Dinner is served in the dining cars. <i>Dress: Formal</i> Please ensure that the Train Manager or Admin Deputy is in possession of your passport.
DAY 6: HLUHLUWE-IMFOLOZI PARK <i>BORDER: GOLELA, SOUTH AFRICA / MPAKA, ESWATINI</i>			
05:00	Continental breakfast is served until departure.		
06:00	Transfer (±30 min) to Hluhluwe for a game drive . As the oldest proclaimed reserve in Africa, Hluhluwe consists 960km ² of hilly topography and is known for its rich wildlife and conservation efforts.		
10:30	Return to the train.		
12:00	Lunch is served in the dining cars. The train travels towards eSwatini. Border formalities take place.		
16:30	Tea in the lounge and observation cars.		
19:30	Dinner is served in the dining cars en route to Mpaka. <i>Dress: Formal</i>		
DAY 7: ESWATINI		ROYAL SWAZI SUN	

05:30	Breakfast is served in the dining cars.	05:30	Breakfast is served in the dining cars until departure.
07:00	Transfer (±60 min) to Mkhaya Reserve . Board game vehicles for a game drive .		Transfer (±90 min) to Royal Swazi Sun for tee off and lunch.
10:00	Transfer (±90 min) to Swazi Candles for a visit with lunch and an opportunity for curio shopping. Transfer (±15 min) to Royal Swazi to join the golfers AND/OR return to the train (±90 min).	16:00	Return to the train.
16:30	Tea in the lounge and observation cars.	18:00	Depart for Komatipoort, South Africa. Border formalities take place.
19:30	Dinner is served in the dining cars. <i>Dress: Formal</i>	19:30	Dinner is served in the dining cars en route to Malelane. <i>Dress: Formal</i>
The tiny Kingdom of eSwatini (Swaziland) covers only 17 000km ² , most of which is mountainous. For such a small country, it is surprising that it sustains two capital cities: Mbabane is the administrative capital and Lobamba is the royal and legislative capital. In April 2018, Swaziland changed its name to the Kingdom of eSwatini (meaning “place of the Swazi”) and is an absolute monarchy. It is landlocked and borders South Africa and Mozambique. At Swazi Candles, guests are invited to interact with the artisans as they make a variety of candles. Woodcarvings, colourful textiles and superb basketwork are also on display. Mantenga Lodge is nestled in the mountains overlooking ‘Execution Rock’.			
DAY 8: KRUGER PARK If available, golf at Leopard Creek may be booked on request for your own account			
05:30	Breakfast is served in the dining cars. <i>If golfing at Leopard Creek, breakfast is served until departure.</i>		
06:30	Game drive in the Krugers National Park with tea, lunch and an opportunity for curio shopping.		
15:00	Return to the train.		
16:30	Tea is served. The train travels west across the Drakensberg Mountains and climbs the spectacular		
19:30	escarpment. Dinner is served in the dining cars. <i>Dress: Formal</i>		
DAY 9: DULLSTROOM		HIGHLAND GATE	
07:00	Breakfast is served in the dining cars. Enjoy a presentation on flyfishing followed by lunch at Walkerson’s Hotel.	07:00	Breakfast is served in the dining cars until departure. Transfer (±40 min) to Highland Gate for tee off and lunch.
15:00	Return to Dullstroom for an introduction to whisky distilling and a tour of the Arts & Crafts Centre . Dinner is served. <i>Dress: “1920s” Theme or Smart Casual</i>	08:45	
19:30		16:30	Tea in the lounge and observation cars. Dinner is served in the dining cars.
		19:30	<i>Dress: “1920s” Theme or Smart Casual</i>
DAY 10: PRETORIA			
	Please ensure luggage is ready for collection 15 minutes before arrival and that you have your passport.		
07:00	Breakfast is served in the dining cars.		
10:00	The train arrives at journey’s end at Rovos Rail Station in Pretoria.		

Please dress accordingly for excursions/game drives: mornings can be cool then warm up considerably; afternoons can be warm then cool down considerably. Warm clothing, comfortable shoes, hats and sun protection are advised. Rain capes are available. See Golf Course Information for the dress code at the golf courses.

Excursions may be changed according to schedule achieved. Times are approximate and cannot be guaranteed.

The golfers’ itinerary is prebooked so non-golfer additions are not accepted. Please consult with the Golf Pro. Please check with the Train Manager or reservations@rovos.co.za for any updates or changes to the itinerary. In your suite you will find the *Journeys* magazine that features articles of interest related to the route.

INCLUDED: Accommodation; all meals; all beverages on board; room service; limited laundry; excursions with a qualified guide (where applicable); entrance fees as per itinerary; government tax; golf activities (green fees, carts, halfway house meals and tea/coffee and bottled water). **EXCLUDED:** All other off-train beverages; international sparkling wine; gratuities; personal expenses; visas; travel insurance; pre- and post-tour transfers, accommodation and flights.

MEALS ON BOARD (unless adjusted) Breakfast 07:00-10:00 • Lunch 13:00 • Tea 16:30 • Dinner 19:30

UPDATED 20 OCTOBER 2023



COURSE INFORMATION

Courses dependent on availability

SUN CITY – GARY PLAYER

Gauteng • Parklands • 6 550m • Walking course • www.suninternational.com

The birth of the Sun City Resort called for South African golfing professional, Gary Player, to design an award-winning golf course that would fit in with the superlative venue. Using his experience and know-how he understood exactly what golfers would appreciate. The strength of this course lies in the fact that it doesn’t favour any particular shot and provides the same result whether playing the forward or intermediate tees. 8000 yards of golfing pleasure await all golfers with mesmerising

views at every turn. Built in an extinct volcanic crater, this immaculate golfing paradise conforms to the stringent US PGA specifications and is home to the annual Nedbank Golf Challenge which plays host to some of the world's golfing legends.

LOST CITY GOLF COURSE

Gauteng • Desert/Parkland • 6 983m/5 953m • Carts compulsory • www.suninternational.com

After the completion of the Gary Player Country Club golf course, the popularity of the Sun City Resort and its many attractions demanded that another golf course be built. Again, Gary Player was commissioned to design the course, his challenge being to create a very different golfing experience. The course defies being bracketed into any particular genre having touches of mountain, desert and even African parkland in its make-up with wide fairways, a series of lakes that separates the ninth with the finishing hole and covers more than 100 hectares with 28 000 square metres of water features. Here the golfer can choose to tackle the course from its championship tees, the standard markers or forward tees. Even playing the shortest route presents a great test as the approaches to the greens – clad in bent grass and protected by bunkers – demand careful judgment.

Signature hole: 13th - par 3 A green in the shape of Africa bordered by a pond, home to several large crocodiles!

CHAMPAGNE SPORTS RESORT

Drakensberg • Mountain • 7 400m • Carts available • www.champagnesportsresort.com

Located in the beautiful Drakensberg area, this course has to be rated as one of the most scenically memorable golf layouts in South Africa. Designed by Hugh Baiocchi and Kevin Curren, it successfully blends the natural attributes of the terrain and the surrounding beauty with the modern demands of a quality course. It undulates up and around the contours of a valley that nestles under the dominant peaks of Champagne and Cathkin Peaks and incorporates several holes with blind tee shots. Professional and novice alike will appreciate the 84 well-appointed bunkers that line the fairways and greens. The quality of the greens is accredited to Trevor Livesey whose passion remains unabated. Though the drama of the mighty mountains dominates the eye, the course also enjoys gentle vistas where the lower hills create a kaleidoscope of colour blessed with trees, rivers and dams to add even more of a challenge.

DURBAN COUNTRY CLUB

Durban • Semi-links • 6 157m • Carts available • www.dcclub.co.za

Built by George Waterman and fellow professional golfer Laurie Waters, the Durban Country Club was established in 1922 and has a proud history. The difficulties these men faced were immense as all earth-moving had to be done manually, giant sand dunes were flattened and dense bush and trees chopped down and carted away. Renowned for its classic Cape Dutch architecture, lush vegetation, undulating fairways, sand dunes and beautiful setting overlooking the Indian Ocean, the club has been the venue of choice for many an important celebration in its rich history.

Signature Hole: 3rd - par 5 - 468m A tee shot from the highest point on the course into a valley below, completely exposing the drive to the ocean gusts. Trees on the right of the straightaway hole need to be avoided as well as the large fairway bunker on the landing area to the left.

COTSWOLD DOWNS

Durban • Parklands • 6 193m • Carts available • www.cotswolddowns.co.za

Set on Hillcrest's doorstep, Cotswold Downs lifestyle and golf estate has great views, rolling hills, indigenous bush, spectacular birdlife and free-roaming antelope. Designed by Peter Matkovich to USGA specifications, the 18-hole championship parklands-type course blends seamlessly with its surrounds featuring bent-grass greens, undulating fairways and natural water features. A mixture of cool season and summer grasses allows the course to be lush all year round. Fairways are punctuated by dams, wetlands and ponds that attract a variety of wildlife while views are excellent from the tee boxes. All levels will find the course challenging but enjoyable and, at a length of 6193m, golfers can expect the odd long par 5 that will test their driving skills with cleverly placed bunkers and interesting water hazards.

Course information supplied by Larry Gould 2012, author of 'Larry Gould's Guide to Golf' as well as from course websites. UPDATED 12 SEPTEMBER 2023

MOUNT EDGECOMBE

Durban • Parklands • 5 885m • Carts available • www.mountedgecombe.com

Neatly tucked away in the rolling hills of KwaZulu-Natal's north coast, Mount Edgecombe Country Club has two 18-hole championship courses, The Woods and The Lakes. Originally known as the Huletts Country Club and created by Sid Brews in 1936, the course was upgraded in 1992 by Hugh Baiocchi and meets USGA specifications.

The Woods is a parkland layout with four sets of tees playable by golfers of any handicap. **Signature holes:** There are three special holes that constitute the course's "Amen Corner" from the 14th to 16th. Holes 14 to 16 are where water hazards come into play. The first one is a par 5 with water guarding the green followed by a par 3 across water and a par 4 where a dam must be carried to reach the fairway.

In 1994, Daysen, De Villiers and Van der Merwe were commissioned to design **The Lakes** directly south of The Woods. Their philosophy was to design a challenging but fair course where serious golfers could test their skills but an occasional golfer could enjoy the game. Opened in 1997, the course is undulating with indigenous bush in places and its share of imposing water hazards. **Signature holes:** The 8th and 9th run alongside the Pani Dam to complete the front nine; water guards the left side of the holes and indigenous bush the right, so make sure to be accurate from the tee.

ROYAL SWAZI

Eswatini • Parklands • 6 166m • Carts available • www.suninternational.com

This spectacular championship course is one of the most scenic locations found in the world. Opened in 1966, it has been laid out on the slopes of the Lebombo Range that curves gently down into the valley. The first nine holes are comparatively level but the second nine fully exploits the mountainous terrain. Challenging features include lakes, gullies thick with vegetation, out-of-bound areas running close to fairways, swirling breezes, clusters of magnificent trees and indigenous plants and wickedly sited bunkers – one is so steep it requires steps to facilitate access.

HIGHLAND GATE

Dullstroom • Mountain • 6 750m • Carts available • www.highlandgate.co.za

Nestled in the Steenkampsberg mountain range near Dullstroom, the Highland Gate Golf & Trout Estate boasts an Ernie Els signature course. Although the testing 18-hole layout provides an equal challenge to both club player and the tour professional, Highland Gate's strength lies in its high altitude charm, which makes for a scenic and truly memorable golf experience. As a test of golf, Highland Gate is challenging and fair, with dramatic changes in elevation that add aesthetic and tactical value. Multiple teeing areas and strategic hazard placement mean it is the kind of layout that can be enjoyed by players of all standards, which is one of the defining principles of the Ernie Els Design philosophy. From the tips it is, quite rightly, a test for the best. Ernie Els: "When you hear golfers say that they were torn between hitting their next shot or pausing to take a photo of the surrounding scenery, you know it has to be a very special place. A world-class course in such a unique and special setting is a rare and powerful combination."

LEOPARD CREEK (*If available, this course may be booked on your own account*)

Kruger Park Malelane • Parklands • 6 631m • Carts compulsory • www.leopardcreek.co.za

*This ultra-exclusive world-class facility is the brainchild of magnate Johan Rupert and, as can be expected, no expense was spared. Bordered to the north and the west by the picturesque Crocodile River and the Kruger National Park, the course represents African golf at its best with indigenous bushveld bordering the immaculate fairways and greens. Innovative architectural and landscaping techniques ensure the course is naturally protected from animals, while lakes and small streams divert through the development to create scenic vistas and interesting golf strategies. Hazards take a new dimension for much of the water is home to the magnificent creatures for which the river is named...crocodiles. **Signature hole: 13th - par 5 - 505m** Here the green is right on the edge of the river but 32m above the water level offering magnificent views into the Kruger Park.*

DRESS CODE

Acceptable clothing:

- Shirts with collars and sleeves must be tucked in
- Traditional long or short golf trousers
- Short trousers with knee-length stockings or short white socks
- Ladies skirts or culottes must be knee-length
- Golf hats or peaks worn with peak forward
- Golf shoes with soft spikes (most clubs)

Not acceptable:

- T-shirts, vests or sleeveless shirts
- Denim jeans
- Sweatpants or cargo pants
- Drawstring shorts
- Shoes without socks
- Cross-trainer sports shoes



SPECIFICATIONS

ROYAL SUITES

±16m²
±172ft²

Bed Dimensions: LxW in CM
Double: 200x189
Split Twin: 200x75



Double Lengthways



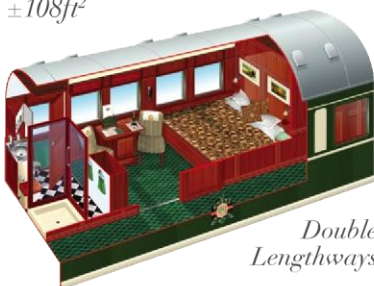
Split Twin

Minibar, air conditioning, writing desk, luggage shelf, cupboards, safe, en-suite bathroom with toilet, basin, bath and shower.

DELUXE SUITES

±10m²
±108ft²

Bed Dimensions: LxW in CM
Double Lengthways: 189x189
Double Crosswise: 189x160
Split Twin: 189x75



Double Lengthways



Double Crosswise



Split Twin

Minibar, air conditioning, writing desk, luggage shelf, cupboards, safe, en-suite bathroom with toilet, basin and shower.

PULLMAN GOLD SUITES

±7m²
±76ft²

Bed Dimensions: LxW in CM
Double: 189x189
Split Twin: 189x75



Daytime Couches and Night-time Split Twin



Night-time Double

Tea drawer, air conditioning, fold-out writing desk, luggage shelf, cupboards, safe, en-suite bathroom with toilet, basin and shower.

THE SUITES & COACHES

Each train has accommodation carriages, dining cars, a lounge car (±26 seats), small gift shop, smoking lounge (±11 seats) and observation car (±32 seats) with open-air balcony. The three types of suites are elegant and spacious offering passengers privacy, comfort and luxury with double or twin beds and fittings and facilities that are of the highest standard. All have en-suites with shower, toilet, basin and bath (Royal only), tea facilities, safes, air conditioning, linen and amenities and are serviced daily. There is adequate storage and small cupboards with hangers and shelves.

Suite layouts may differ from images.

Royals and Deluxes sometimes have a room divider.

ROYAL SUITES



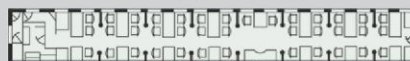
DELUXE SUITES



PULLMAN GOLD SUITES



PILLARED DINING CAR



BANQUETTE DINING CAR



OBSERVATION CAR



LOUNGE CAR



CLUB LOUNGE & DELUXE CAR



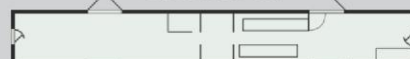
STAFF CAR



KITCHEN CAR



GENERATOR CAR



PROVISIONAL BOOKING

Please reference the payment with your surname and email proof of payment to rob@southafrica.to. Note that SA TRAVEL ONLINE will never change its banking details. If you receive altered banking details immediately email rob@southafrica.to

Bank	Absa
Branch Code	632005
Account Name	SA TRAVEL ONLINE (PTY) LTD
Account Number	4111 5747 60
Company Details	SA TRAVEL ONLINE (PTY) LTD Registration: 2023/754036/07 Address: 17 Elizabeth Avenue, Pinelands, 7405, Cape Town, Western Cape

- To action a provisional booking please make a **deposit of R1000**; we will then confirm your provisional booking (if the provisional booking could not be made, and we cannot agree on an alternative arrangement, we will return the deposit).
- Upon confirmation that the provisional booking has been made you will then be required to pay the balance within 24 hours. If the balance is not paid you will forfeit the deposit.

SA Travel Online is a licensed reseller of Rovos Rail journeys.

