



PARK VILLAGE AUCTIONS

Trusted by banks, respected by buyers

VALUATION

ESTATE REFERENCE: AUTOPAX PASSENGER SERVICES (SOC) (APRIL 2023) 2
ADDRESS: C/O AUTOPAX PASSENGER SERVICES (SOC), HARMONY, SALVOKOP
CITY: JOHANNESBURG AND PRETORIA
DATE: 24 April 2023
MASTER/ACC REF:
SEQ NO:

MERCEDES BENZ ANDARE MARCOPOLO 1000 BUS

VEHICLE DETAILS

YEAR: 2010
ENG: 457916U0938775
VIN 1: 9BM634061AB678788
VIN 2:
REG: CA151744
ODO: 613954
BANK:
ACC: 5000638 - 4871 - HAR002

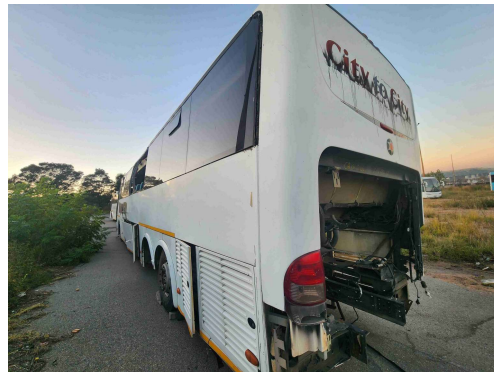
CONDITION SUMMARY

TYRES AND WHEEL RIMS REQUIRE REPLACEMENT. DENTS, STONE CHIPS AND SCRATCHES NOTED ALL ROUND. LIGHTS ARE INTACT. WINDSCREEN AND SOME WINDOWS REMOVED. SOME SEATS ARE REMOVED. DASHBOARD AND INSTRUMENT CLUSTER IS INTACT. VEHICLE IS IN NON-RUNNING CONDITION. ENGINE IS REMOVED. OVERALL CONDITION IS POOR.



R27,500

FORCED SALE VALUE EX VAT



R60,000

MARKET RELATED VALUE EX VAT

MERCEDES BENZ ANDARE MARCOPOLO 1000 BUS

VEHICLE DETAILS

YEAR: 2010
ENG: 457916U0938902
VIN 1: 9BM634061AB679054
VIN 2:
REG: ZDN531GP
ODO: 872771
BANK:
ACC: 5000336 - 4905 - HAR019



R95,000

FORCED SALE VALUE EX VAT

CONDITION SUMMARY

DENTS, STONE CHIPS AND SCRATCHES NOTED ALL ROUND. FRONT BUMPER AND LIGHTS ARE REMOVED. WINDSCREEN IS INTACT. WINDOWS ARE BROKEN. SEATS ARE INTACT. DASHBOARD AND INSTRUMENT CLUSTER IS INTACT. VEHICLE IS IN NON-RUNNING CONDITION. OVERALL CONDITION IS POOR.



R160,000

MARKET RELATED VALUE EX VAT

MERCEDES BENZ PARADISO 1200 BUS

VEHICLE DETAILS

YEAR: 2010
ENG: 457916U0941795
VIN 1: 9BM634061AB691808
VIN 2:
REG: ZGX179GP
ODO: 742398
BANK:
ACC: 5000794 - 5651 - HAR029

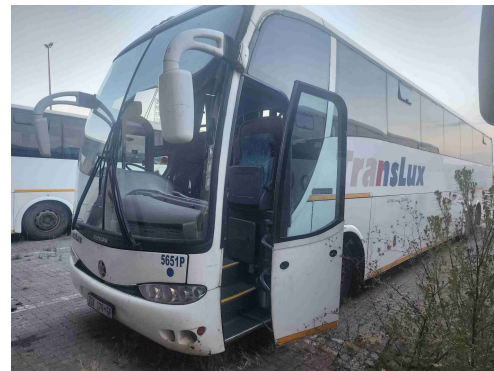


R95,000

FORCED SALE VALUE EX VAT

CONDITION SUMMARY

DENTS, STONE CHIPS AND SCRATCHES NOTED ALL ROUND. LIGHTS ARE INTACT. WINDSCREEN IS INTACT. SEATS ARE INTACT. DASHBOARD AND INSTRUMENT CLUSTER IS STRIPPED. VEHICLE IS IN NON-RUNNING CONDITION. ENGINE IS STRIPPED. OVERALL CONDITION IS POOR.



R167,000

MARKET RELATED VALUE EX VAT

MERCEDES BENZ ANDARE MARCOPOLO 1000 BUS

VEHICLE DETAILS

YEAR: 2010
ENG: 457915U0938109
VIN 1: 9BM634061AB675629
VIN 2:
REG: ZFG906GP
ODO: 961819
BANK:
ACC: 5000140 - 4840 - HAR044



R107,000

FORCED SALE VALUE EX VAT

CONDITION SUMMARY

DENTS, STONE CHIPS AND SCRATCHES NOTED ALL ROUND. REAR BUMPER AND LIGHTS ARE REMOVED. WINDSCREEN IS INTACT. DRIVER SEAT IS REMOVED. DASHBOARD AND INSTRUMENT CLUSTER IS INTACT. VEHICLE IS IN NON-RUNNING CONDITION. OVERALL CONDITION IS POOR.



R160,000

MARKET RELATED VALUE EX VAT

MERCEDES BENZ ANDARE MARCOPOLO 1000 BUS

VEHICLE DETAILS

YEAR: 2010
ENG: 9BM6340619B651196
VIN 1: 9BM6340619B651196
VIN 2:
REG: YYW137GP
ODO: 770890
BANK:
ACC: 5000251 - 4765 - HAR050



R115,000

FORCED SALE VALUE EX VAT

CONDITION SUMMARY

DENTS, STONE CHIPS AND SCRATCHES NOTED ALL ROUND. REAR BUMPER IS REMOVED. REAR LIGHTS ARE REMOVED. WINDSCREEN IS INTACT. SEATS ARE INTACT. DASHBOARD AND INSTRUMENT CLUSTER IS INTACT. VEHICLE IS IN NON-RUNNING CONDITION. OVERALL CONDITION IS POOR.



R125,000

MARKET RELATED VALUE EX VAT

MERCEDES BENZ ANDARE MARCOPOLO 1000 BUS

VEHICLE DETAILS

YEAR: 2010
ENG: 457916U0941006
VIN 1: 9BM634061AB687837
VIN 2:
REG: ZGX721GP
ODO: 681892
BANK:
ACC: 5000754 - 4985 - HAR053



R115,000

FORCED SALE VALUE EX VAT

CONDITION SUMMARY

DENTS, STONE CHIPS AND SCRATCHES NOTED ALL ROUND. LIGHTS ARE INTACT. WINDSCREEN IS INTACT. SEATS ARE INTACT. DASHBOARD AND INSTRUMENT CLUSTER IS INTACT. VEHICLE IS IN NON-RUNNING CONDITION. OVERALL CONDITION IS POOR.



R125,000

MARKET RELATED VALUE EX VAT

MERCEDES BENZ ANDARE MARCOPOLO 1000 BUS

VEHICLE DETAILS

YEAR: 2010
ENG: 457916U0939170
VIN 1: 9BM634061AB680175
VIN 2:
REG: ZDN394GP
ODO: 1171983
BANK:
ACC: 5000317 - 4868 - HAR058



R105,000

FORCED SALE VALUE EX VAT

CONDITION SUMMARY

DENTS, STONE CHIPS AND SCRATCHES NOTED ALL ROUND. REAR BUMPER IS REMOVED. LIGHTS ARE INTACT. WINDSCREEN IS INTACT. SEATS ARE INTACT. DASHBOARD AND INSTRUMENT CLUSTER IS INTACT. ENGINE FAILURE. VEHICLE IS IN NON-RUNNING CONDITION. OVERALL CONDITION IS POOR.



R155,000

MARKET RELATED VALUE EX VAT

MERCEDES BENZ ANDARE MARCOPOLO 1000 BUS

VEHICLE DETAILS

YEAR: 2010
ENG: 457916U0939606
VIN 1: 9BM634061AB682825
VIN 2:
REG: ZFF253GP
ODO: 1171983
BANK:
ACC: 5000635 - 4881 - HAR059A



R80,000

FORCED SALE VALUE EX VAT

CONDITION SUMMARY

DENTS, STONE CHIPS AND SCRATCHES NOTED ALL ROUND. ACCIDENT DAMAGED NOTED ON REAR RIGHT SIDE. REAR LIGHT IS REMOVED. WINDSCREEN IS INTACT. SEATS ARE INTACT. DASHBOARD AND INSTRUMENT CLUSTER IS STRIPPED. VEHICLE IS IN NON-RUNNING CONDITION. OVERALL CONDITION IS POOR.



R140,000

MARKET RELATED VALUE EX VAT

MERCEDES BENZ ANDARE MARCOPOLO 1000 BUS

VEHICLE DETAILS

YEAR: 2010
ENG: 457916U0938496
VIN 1: 9BM634061AB677517
VIN 2:
REG: YYV829GP
ODO: 589489
BANK:
ACC: 5000241 - 4776 - HAR060



R105,000

FORCED SALE VALUE EX VAT

CONDITION SUMMARY

DENTS, STONE CHIPS AND SCRATCHES NOTED ALL ROUND. LIGHTS ARE REMOVED WINDSCREEN IS INTACT. SEATS ARE INTACT. DASHBOARD AND INSTRUMENT CLUSTER IS INTACT. VEHICLE IS IN NON-RUNNING CONDITION. OVERALL CONDITION IS POOR.



R145,000

MARKET RELATED VALUE EX VAT

MERCEDES BENZ ANDARE MARCOPOLO 1000 BUS

VEHICLE DETAILS

YEAR: 2010
ENG: 457916U0938781
VIN 1: 9BM634061AB678789
VIN 2:
REG: ZDN448GP
ODO: 958326
BANK:
ACC: 5000323 - 4912 - HAR061



R105,000

FORCED SALE VALUE EX VAT

CONDITION SUMMARY

LEFT FRONT TYRE IS REMOVED. DENTS, STONE CHIPS AND SCRATCHES NOTED ALL ROUND. LIGHTS ARE INTACT. WINDSCREEN IS INTACT. SEATS ARE INTACT. DASHBOARD AND INSTRUMENT CLUSTER IS INTACT. VEHICLE IS IN NON-RUNNING CONDITION. OVERALL CONDITION IS POOR.



R155,000

MARKET RELATED VALUE EX VAT

MERCEDES BENZ ANDARE MARCOPOLO 1000 BUS

VEHICLE DETAILS

YEAR: 2010
ENG: 457916U0939601
VIN 1: 9BM634061AB684017
VIN 2:
REG: ZFD414GP
ODO: 1184992
BANK:
ACC: 5000617 - 4889 - HAR062



R90,000

FORCED SALE VALUE EX VAT

CONDITION SUMMARY

DENTS, STONE CHIPS AND SCRATCHES NOTED ALL ROUND. RIGHT FRONT AND REAR LIGHTS ARE REMOVED. WINDSCREEN IS INTACT. DRIVER SEAT IS REMOVED. DASHBOARD AND INSTRUMENT CLUSTER IS INTACT. ENGINE STRIPPED. REAR AXLE STRIPPED. VEHICLE IS IN NON-RUNNING CONDITION. OVERALL CONDITION IS POOR.



R140,000

MARKET RELATED VALUE EX VAT

MERCEDES BENZ PARADISO 1200 BUS

VEHICLE DETAILS

YEAR: 2010
ENG: 457916U0942105
VIN 1: 9BM634061AB694056
VIN 2:
REG: ZGX277GP
ODO: 1453421
BANK:
ACC: 5000798 - 5648 - HAR065



R85,000

FORCED SALE VALUE EX VAT

CONDITION SUMMARY

FRONT WHEEL IS REMOVED. DENTS, STONE CHIPS AND SCRATCHES NOTED ALL ROUND. FRONT AND REAR LIGHTS ARE REMOVED. WINDSCREEN IS INTACT. DRIVER SEAT IS REMOVED. DASHBOARD AND INSTRUMENT CLUSTER IS INTACT. VEHICLE IS IN NON-RUNNING CONDITION. OVERALL CONDITION IS POOR.



R145,000

MARKET RELATED VALUE EX VAT

MERCEDES BENZ ANDARE MARCOPOLO 1000 BUS

VEHICLE DETAILS

YEAR: 2010
ENG: 457916U0937827
VIN 1: 9BM634061AB673937
VIN 2:
REG: YYW132GP
ODO: 679349
BANK:
ACC: 5000025 - 4767 - HAR067



R105,000

FORCED SALE VALUE EX VAT

CONDITION SUMMARY

LEFT FRONT TYRE IS REMOVED. DENTS, STONE CHIPS AND SCRATCHES NOTED ALL ROUND. REAR LIGHTS ARE REMOVED. WINDSCREEN IS INTACT. SEATS ARE INTACT. DASHBOARD AND INSTRUMENT CLUSTER IS INTACT. VEHICLE IS IN NON-RUNNING CONDITION. OVERALL CONDITION IS POOR.



R155,000

MARKET RELATED VALUE EX VAT

MERCEDES BENZ ANDARE MARCOPOLO 1000 BUS

VEHICLE DETAILS

YEAR: 2010
ENG: 457916U0938512
VIN 1: 9BM634061AB677525
VIN 2:
REG: ZBM403GP
ODO: 1365042
BANK:
ACC: 5000285 - 4806 - HAR071



R75,000

FORCED SALE VALUE EX VAT

CONDITION SUMMARY

DENTS, STONE CHIPS AND SCRATCHES NOTED ALL ROUND. IMPACT DAMAGE NOTED ON THE FRONT OF THE BONNET. LIGHTS ARE INTACT. WINDSCREEN IS INTACT. SEATS ARE INTACT. DASHBOARD AND INSTRUMENT CLUSTER IS INTACT. VEHICLE IS IN NON-RUNNING CONDITION. OVERALL CONDITION IS POOR.



R120,000

MARKET RELATED VALUE EX VAT

MERCEDES BENZ ANDARE MARCOPOLO 1000 BUS

VEHICLE DETAILS

YEAR: 2010
ENG: 457916U0938603
VIN 1: 9BM634061AB677992
VIN 2:
REG: ZHN377GP
ODO: 1251067
BANK:
ACC: 5000681 - 4960 - HAR072



R90,000

FORCED SALE VALUE EX VAT

CONDITION SUMMARY

DENTS, STONE CHIPS AND SCRATCHES NOTED ALL ROUND. LIGHTS ARE INTACT. WINDSCREEN IS INTACT. SEATS ARE INTACT. DASHBOARD AND INSTRUMENT CLUSTER IS INTACT. VEHICLE IS IN NON-RUNNING CONDITION. OVERALL CONDITION IS POOR.



R130,000

MARKET RELATED VALUE EX VAT

MERCEDES BENZ PARADISO 1200 BUS

VEHICLE DETAILS

YEAR: 2010
ENG: 457916U0941783
VIN 1: 9BM634061AB691800
VIN 2:
REG: ZGF382GP
ODO: 547594
BANK:
ACC: 5000724 - 5627 - HAR073



R65,000

FORCED SALE VALUE EX VAT

CONDITION SUMMARY

ACCIDENT DAMAGE NOTED TO THE FRONT OF THE VEHICLE. LIGHTS ARE INTACT. BODY PANELS REMOVED. WINDSCREEN IS REMOVED. SEATS ARE INTACT. DASHBOARD AND INSTRUMENT CLUSTER IS DAMAGED. VEHICLE IS IN NON-RUNNING CONDITION. OVERALL CONDITION IS POOR.



R120,000

MARKET RELATED VALUE EX VAT

MERCEDES BENZ PARADISO 1200 BUS

VEHICLE DETAILS

YEAR: 2010
ENG: 457916U0941775
VIN 1: 9BM634061AB691800
VIN 2:
REG: ZHN573GP
ODO: 538537
BANK:
ACC: 5000743 - 5644 - HAR103



R105,000

FORCED SALE VALUE EX VAT

CONDITION SUMMARY

DENTS, STONE CHIPS AND SCRATCHES NOTED ALL ROUND. REAR LIGHTS ARE REMOVED. WINDSCREEN IS INTACT. SEATS ARE INTACT. DASHBOARD AND INSTRUMENT CLUSTER IS INTACT. VEHICLE IS IN NON-RUNNING CONDITION. OVERALL CONDITION IS POOR.



R157,000

MARKET RELATED VALUE EX VAT

MAN MARCOPOLO BUS

VEHICLE DETAILS

YEAR: 2010
ENG: N/A
VIN 1: N/A
VIN 2:
REG: RFJ557GP
ODO: N/A
BANK:
ACC: 5000482 - 4521 - HAR202



R90,000

FORCED SALE VALUE EX VAT

CONDITION SUMMARY

RUST, DENTS, STONE CHIPS AND SCRATCHES NOTED ALL ROUND. LIGHTS ARE INTACT. WINDSCREEN IS INTACT. WINDOWS ARE BROKEN. SEATS ARE INTACT. DASHBOARD AND INSTRUMENT CLUSTER IS STRIPPED. VEHICLE IS IN NON-RUNNING CONDITION. OVERALL CONDITION IS POOR.



R140,000

MARKET RELATED VALUE EX VAT

MERCEDES BENZ ANDARE MARCOPOLO 1000 BUS

VEHICLE DETAILS

YEAR: 2010
ENG: 457916U0934500
VIN 1: 9BM6340619B650020
VIN 2:
REG: YYW002GP
ODO: 1945080
BANK:
ACC: 5000022 - 4775 - HAR203



R90,000

FORCED SALE VALUE EX VAT

CONDITION SUMMARY

DENTS, STONE CHIPS AND SCRATCHES NOTED ALL ROUND. LIGHTS ARE INTACT. WINDSCREEN IS INTACT. SEATS ARE INTACT. DASHBOARD AND INSTRUMENT CLUSTER IS INTACT. ENGINE FAILURE. VEHICLE IS IN NON-RUNNING CONDITION. OVERALL CONDITION IS POOR.



R140,000

MARKET RELATED VALUE EX VAT

MERCEDES BENZ ANDARE MARCOPOLO 1000 BUS

VEHICLE DETAILS

YEAR: 2010
ENG: 457916U0938436
VIN 1: 9BM634061AB676706
VIN 2:
REG: ZDN209GP
ODO: 751655
BANK:
ACC: 5000303 - 4820 - HAR205

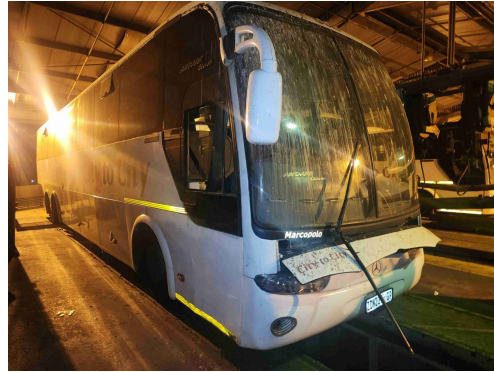


R115,000

FORCED SALE VALUE EX VAT

CONDITION SUMMARY

SOME TYRES AND RIMS REQUIRE REPLACEMENTS. DENTS, STONE CHIPS AND SCRATCHES NOTED ALL ROUND. RIGHT REAR LIGHTS REMOVED. WINDSCREEN IS INTACT. SEATS ARE INTACT. DASHBOARD AND INSTRUMENT CLUSTER IS INTACT. REAR DIFF AXLE STRIPPED. VEHICLE IS IN NON-RUNNING CONDITION. OVERALL CONDITION IS POOR.



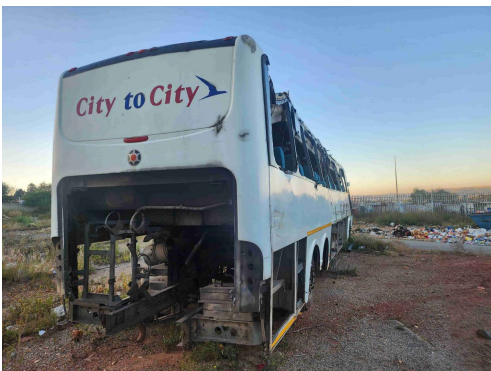
R175,000

MARKET RELATED VALUE EX VAT

MERCEDES BENZ ANDARE MARCOPOLO 1000 BUS

VEHICLE DETAILS

YEAR: 2010
ENG: 457916U0934804
VIN 1: 9BM6340619B652129
VIN 2:
REG: YYW125GP
ODO: 1274804
BANK:
ACC: 5000250 - 4781 - HAR206



R30,000

FORCED SALE VALUE EX VAT

CONDITION SUMMARY

ACCIDENT DAMAGE NOTED ALL ROUND. FRONT BONNET AND PANELS REMOVED. FRONT AND REAR LIGHTS ARE REMOVED. WINDSCREEN IS REMOVED. WINDOWS ARE BROKEN. SEATS ARE INTACT. DASHBOARD AND INSTRUMENT CLUSTER IS STRIPPED. VEHICLE IS IN NON-RUNNING CONDITION. ENGINE IS STRIPPED. OVERALL CONDITION IS POOR.



R70,000

MARKET RELATED VALUE EX VAT

MERCEDES BENZ ANDARE MARCOPOLO 1000 BUS

VEHICLE DETAILS

YEAR: 2010
ENG: 457916U0940705
VIN 1: 9BM634061AB686320
VIN 2:
REG: ZGC727GP
ODO: 1217886
BANK:
ACC: 5000657 - 4937 - HAR208



R60,000

FORCED SALE VALUE EX VAT

CONDITION SUMMARY

ONE TYRE AND WHEEL RIM REQUIRES REPLACEMENT. DENTS, STONE CHIPS AND SCRATCHES NOTED ALL ROUND. LIGHTS ARE INTACT. WINDSCREEN IS INTACT. SEATS ARE INTACT. DASHBOARD AND INSTRUMENT CLUSTER IS INTACT. VEHICLE IS IN NON-RUNNING CONDITION. OVERALL CONDITION IS POOR.



R105,000

MARKET RELATED VALUE EX VAT

MERCEDES BENZ ANDARE MARCOPOLO 1000 BUS

VEHICLE DETAILS

YEAR: 2009
ENG: 457916U0934462
VIN 1: 9BM6340619B649774
VIN 2:
REG: YTY461GP
ODO: 487513
BANK:
ACC: 5000113 - 4701 - HAR209

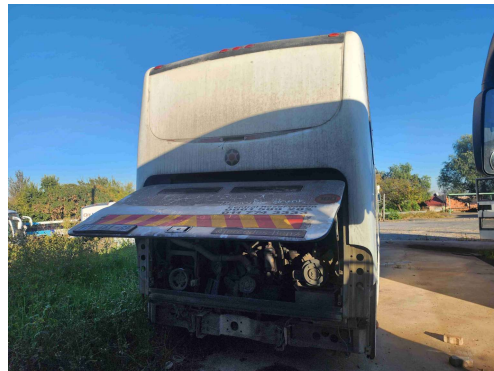


R80,000

FORCED SALE VALUE EX VAT

CONDITION SUMMARY

DENTS, STONE CHIPS AND SCRATCHES NOTED ALL ROUND. FRONT GRILL AND REAR BUMPER IS REMOVED. FRONT AND REAR LIGHTS ARE REMOVED. WINDSCREEN IS INTACT. SEATS ARE INTACT. DASHBOARD AND INSTRUMENT CLUSTER IS INTACT. DIFF IS STRIPPED. VEHICLE IS IN NON-RUNNING CONDITION. OVERALL CONDITION IS POOR.



R120,000

MARKET RELATED VALUE EX VAT

MERCEDES BENZ ANDARE MARCOPOLO 1000 BUS

VEHICLE DETAILS

YEAR: 2010
ENG: 457916U0940340
VIN 1: 9BM634061AB686010
VIN 2:
REG: ZGF544GP
ODO: 1389360
BANK:
ACC: 5000676 - 4917 - HAR210



R95,000

FORCED SALE VALUE EX VAT

CONDITION SUMMARY

DENTS, STONE CHIPS AND SCRATCHES NOTED ALL ROUND. LIGHTS ARE INTACT. WINDSCREEN IS INTACT. SEATS ARE INTACT. DASHBOARD AND INSTRUMENT CLUSTER IS STRIPPED. VEHICLE IS IN NON-RUNNING CONDITION. OVERALL CONDITION IS POOR.



R140,000

MARKET RELATED VALUE EX VAT

MERCEDES BENZ PARADISO 1200 BUS

VEHICLE DETAILS

YEAR: 2010
ENG: 457916U0941473
VIN 1: 9BM634061AB690952
VIN 2:
REG: ZGF058GP
ODO: 789699
BANK:
ACC: 5000703 - 5600 - HAR211



R120,000

FORCED SALE VALUE EX VAT

CONDITION SUMMARY

DENTS, STONE CHIPS AND SCRATCHES NOTED ALL ROUND. LIGHTS ARE INTACT. WINDSCREEN IS INTACT. SEATS ARE INTACT. DASHBOARD AND INSTRUMENT CLUSTER IS INTACT. VEHICLE IS IN NON-RUNNING CONDITION. OVERALL CONDITION IS POOR.



R180,000

MARKET RELATED VALUE EX VAT

MERCEDES BENZ ANDARE MARCOPOLO 1000 BUS

VEHICLE DETAILS

YEAR: 2010
ENG: 457916U0937956
VIN 1: 9BM634061AB674599
VIN 2:
REG: YYW039GP
ODO: 1422312
BANK:
ACC: 5000023 - 4773 - SAL002



R230,000

FORCED SALE VALUE EX VAT

CONDITION SUMMARY

DENTS, STONE CHIPS AND SCRATCHES NOTED ALL ROUND. REAR LIGHTS ARE INTACT. WINDSCREEN IS CHIPPED. SEATS ARE INTACT. DASHBOARD AND INSTRUMENT CLUSTER IS INTACT. VEHICLE IS IN RUNNING CONDITION. OVERALL CONDITION IS FAIR.



R310,000

MARKET RELATED VALUE EX VAT

MERCEDES BENZ PARADISO 1200 BUS

VEHICLE DETAILS

YEAR: 2010
ENG: 457916U0938346
VIN 1: 9BM634061AB676286
VIN 2:
REG: YYW119GP
ODO: 495005
BANK:
ACC: 500086 - 5518 - SAL011



R90,000

FORCED SALE VALUE EX VAT

CONDITION SUMMARY

DENTS, STONE CHIPS AND SCRATCHES NOTED ALL ROUND. LIGHTS ARE INTACT. WINDSCREEN IS INTACT. SEATS ARE STRIPPED. DASHBOARD AND INSTRUMENT CLUSTER IS STRIPPED. DIFF, ENGINE AND GEARBOX IS REMOVED. VEHICLE IS IN NON-RUNNING CONDITION. OVERALL CONDITION IS POOR.



R140,000

MARKET RELATED VALUE EX VAT

MERCEDES BENZ ANDARE MARCOPOLO 1000 BUS

VEHICLE DETAILS

YEAR: 2010
ENG: 457916U0941268
VIN 1: 9BM634061AB689726
VIN 2:
REG: ZGX680GP
ODO: 1104201
BANK:
ACC: 5000753 - 4965 - SAL012



R85,000

FORCED SALE VALUE EX VAT

CONDITION SUMMARY

DENTS, STONE CHIPS AND SCRATCHES NOTED ALL ROUND. GRILL, FRONT AND REAR BUMPER REMOVED. LIGHTS AND MIRRORS ARE REMOVED. WINDSCREEN IS INTACT. SEATS ARE REMOVED. DASHBOARD AND INSTRUMENT CLUSTER IS STRIPPED. ENGINE IS STRIPPED. VEHICLE IS IN NON-RUNNING CONDITION. OVERALL CONDITION IS POOR.



R120,000

MARKET RELATED VALUE EX VAT

MERCEDES BENZ PARADISO 1200 BUS

VEHICLE DETAILS

YEAR: 2009
ENG: 457916U0933490
VIN 1: 9BM6340619B644981
VIN 2:
REG: YTY469GP
ODO: 808817
BANK:
ACC: 5000069 - 5500 - SAL016



R100,000

FORCED SALE VALUE EX VAT

CONDITION SUMMARY

DENTS, STONE CHIPS AND SCRATCHES NOTED ALL ROUND. REAR LIGHTS ARE REMOVED. WINDSCREEN IS INTACT. SEATS ARE INTACT. DASHBOARD AND INSTRUMENT CLUSTER IS INTACT. DIFF AND AXEL ARE REMOVED. VEHICLE IS IN NON-RUNNING CONDITION. OVERALL CONDITION IS POOR.



R130,000

MARKET RELATED VALUE EX VAT

MERCEDES BENZ PARADISO 1200 BUS

VEHICLE DETAILS

YEAR: 2010
ENG: 457916U0941318
VIN 1: 9BM634061AB690553
VIN 2:
REG: ZGF249GP
ODO: 545734
BANK:
ACC: 5000716 - 5619 - SAL018



R105,000

FORCED SALE VALUE EX VAT

CONDITION SUMMARY

DENTS, STONE CHIPS AND SCRATCHES NOTED ALL ROUND. RIGHT FRONT AND LEFT REAR LIGHTS ARE REMOVED. WINDSCREEN IS INTACT. SEATS ARE INTACT. DASHBOARD AND INSTRUMENT CLUSTER IS STRIPPED. VEHICLE IS IN NON-RUNNING CONDITION. OVERALL CONDITION IS POOR.



R142,000

MARKET RELATED VALUE EX VAT

MERCEDES BENZ PARADISO 1200 BUS

VEHICLE DETAILS

YEAR: 2010
ENG: 457916U0938894
VIN 1: 9BM634061AB679053
VIN 2:
REG: ZBM575GP
ODO: 846373
BANK:
ACC: 5000296 - 5548 - SAL019



R475,000

FORCED SALE VALUE EX VAT

CONDITION SUMMARY

TYRES ARE WELL USED. DENTS, STONE CHIPS AND SCRATCHES NOTED ALL ROUND. LIGHTS ARE INTACT. WINDSCREEN IS INTACT. SEATS ARE INTACT. DASHBOARD AND INSTRUMENT CLUSTER IS INTACT. VEHICLE IS IN RUNNING CONDITION. OVERALL CONDITION IS FAIR.



R575,000

MARKET RELATED VALUE EX VAT

MAN LION EXPLORER BUS

VEHICLE DETAILS

YEAR: 2009
ENG: 50521881832192
VIN 1: AAMHB40452PX22675
VIN 2:
REG: YPT284GP
ODO: 142597
BANK:
ACC: 5000052 - 2001 - SAL020



R110,000

FORCED SALE VALUE EX VAT

CONDITION SUMMARY

DENTS, STONE CHIPS AND SCRATCHES NOTED ALL ROUND. GRILL AND BUMPERS REMOVED. LIGHTS ARE INTACT. WINDSCREEN IS INTACT. SEATS ARE INTACT. DASHBOARD AND INSTRUMENT CLUSTER IS STRIPPED. ENGINE STRIPPED. VEHICLE IS IN NON-RUNNING CONDITION. OVERALL CONDITION IS POOR.



R185,000

MARKET RELATED VALUE EX VAT

MERCEDES BENZ PARADISO 1200 BUS

VEHICLE DETAILS

YEAR: 2010
ENG: 457916U0939156
VIN 1: 9BM634061AB679896
VIN 2:
REG: ZFD422GP
ODO: 1122167
BANK:
ACC: 5000156 - 5579 - SAL023



R120,000

FORCED SALE VALUE EX VAT

CONDITION SUMMARY

DENTS, STONE CHIPS AND SCRATCHES NOTED ALL ROUND. FRONT AND REAR LIGHTS ARE INTACT. WINDSCREEN IS INTACT. SEATS ARE INTACT. DASHBOARD AND INSTRUMENT CLUSTER IS STRIPPED. VEHICLE IS IN NON-RUNNING CONDITION. OVERALL CONDITION IS POOR.



R170,000

MARKET RELATED VALUE EX VAT

MAN MARCOPOLO VIAGO BUS

VEHICLE DETAILS

YEAR: 2004
ENG: N/A
VIN 1: BUSRCFBUN4B141032P
VIN 2:
REG: RJN550GP
ODO: N/A
BANK:
ACC: 5000495 - 4534 - SAL024



R70,000

FORCED SALE VALUE EX VAT

CONDITION SUMMARY

DENTS, STONE CHIPS AND SCRATCHES NOTED ALL ROUND. LIGHTS ARE INTACT. WINDSCREEN IS INTACT. SEATS ARE INTACT. DASHBOARD AND INSTRUMENT CLUSTER IS STRIPPED. VEHICLE IS IN NON-RUNNING CONDITION. OVERALL CONDITION IS POOR.



R115,000

MARKET RELATED VALUE EX VAT

MERCEDES BENZ PARADISO 1200 BUS

VEHICLE DETAILS

YEAR: 2010
ENG: 457916U0941561
VIN 1: 9BM634061AB691329
VIN 2:
REG: ZGK706GP
ODO: 1134629
BANK:
ACC: 5000739 - 5635 - SAL025



R111,000

FORCED SALE VALUE EX VAT

CONDITION SUMMARY

DENTS, STONE CHIPS AND SCRATCHES NOTED ALL ROUND. REAR BUMPER IS DAMAGED. LIGHTS ARE REMOVED. WINDSCREEN IS INTACT. SEATS ARE INTACT. DASHBOARD AND INSTRUMENT CLUSTER IS STRIPPED. VEHICLE IS IN NON-RUNNING CONDITION. OVERALL CONDITION IS POOR.



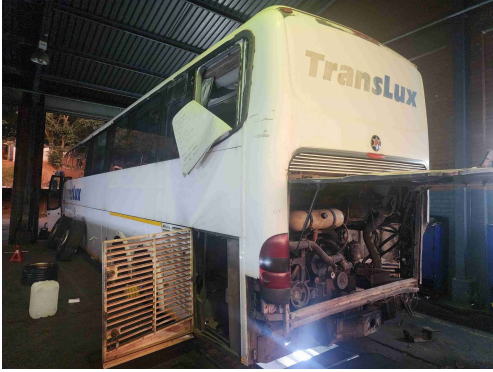
R175,000

MARKET RELATED VALUE EX VAT

MERCEDES BENZ PARADISO 1200 BUS

VEHICLE DETAILS

YEAR: 2010
ENG: 457916U0938688
VIN 1: 9BM634061AB678794
VIN 2:
REG: ZFD245GP
ODO: 378774
BANK:
ACC: 5000154 - 5588 - SAL030



R65,000

FORCED SALE VALUE EX VAT

CONDITION SUMMARY

DENTS, STONE CHIPS AND SCRATCHES NOTED ALL ROUND. REAR BUMPER REMOVED. RIGHT REAR LIGHT IS REMOVED. WINDSCREEN IS INTACT. SEATS ARE INTACT. DASHBOARD AND INSTRUMENT CLUSTER IS STRIPPED. VEHICLE IS IN NON-RUNNING CONDITION. OVERALL CONDITION IS POOR.



R100,000

MARKET RELATED VALUE EX VAT

MERCEDES BENZ ANDARE MARCOPOLO 1000 BUS

VEHICLE DETAILS

YEAR: 2010
ENG: 457916U0940037
VIN 1: 9BM634061AB684564
VIN 2:
REG: ZFD855GP
ODO: 206001
BANK:
ACC: 5000623 - 4896 - SAL031



R100,000

FORCED SALE VALUE EX VAT

CONDITION SUMMARY

DENTS, STONE CHIPS AND SCRATCHES NOTED ALL ROUND. RIGHT REAR LIGHT IS REMOVED. WINDSCREEN IS INTACT. SEATS ARE INTACT. DASHBOARD AND INSTRUMENT CLUSTER IS STRIPPED. VEHICLE IS IN NON-RUNNING CONDITION. OVERALL CONDITION IS POOR.



R145,000

MARKET RELATED VALUE EX VAT

MERCEDES BENZ ANDARE MARCOPOLO 1000 BUS

VEHICLE DETAILS

YEAR: 2010
ENG: 457916U0938769
VIN 1: 9BM634061AB678790
VIN 2:
REG: ZBH275GP
ODO: 1213190
BANK:
ACC: 5000603 - 4796 - SAL033A



R105,000

FORCED SALE VALUE EX VAT

CONDITION SUMMARY

DENTS, STONE CHIPS AND SCRATCHES NOTED ALL ROUND. REAR BUMPER DAMAGED. LIGHTS ARE INTACT. WINDSCREEN IS INTACT. SEATS ARE INTACT. DASHBOARD AND INSTRUMENT CLUSTER IS INTACT. ENGINE FAILURE. VEHICLE IS IN NON-RUNNING CONDITION. OVERALL CONDITION IS POOR.



R155,000

MARKET RELATED VALUE EX VAT

MERCEDES BENZ PARADISO 1200 BUS

VEHICLE DETAILS

YEAR: 2010
ENG: N/A
VIN 1: 9BM634061AB682059
VIN 2:
REG: ZBL770GP
ODO: 5000068
BANK:
ACC: 5000068 - 5538 - SAL034



R95,000

FORCED SALE VALUE EX VAT

CONDITION SUMMARY

DENTS, STONE CHIPS AND SCRATCHES NOTED ALL ROUND. GRILL AND BUMPER IS STRIPPED. LIGHTS ARE REMOVED. WINDSCREEN IS INTACT. SEATS ARE INTACT. DASHBOARD AND INSTRUMENT CLUSTER IS STRIPPED. VEHICLE IS IN NON-RUNNING CONDITION. OVERALL CONDITION IS POOR.



R140,000

MARKET RELATED VALUE EX VAT

MERCEDES BENZ PARADISO 1200 BUS

VEHICLE DETAILS

YEAR: 2010
ENG: 457916U0939184
VIN 1: 9BM634061AB680176
VIN 2:
REG: ZBM615GP
ODO: 1268887
BANK:
ACC: 5000159 - 5554 - SAL036



R75,000

FORCED SALE VALUE EX VAT

CONDITION SUMMARY

DENTS, STONE CHIPS AND SCRATCHES NOTED ALL ROUND. FRONT BUMPER IS DAMAGED AND BONNET IS REMOVED. LIGHTS ARE REMOVED. WINDSCREEN IS INTACT. SEATS ARE INTACT. DASHBOARD AND INSTRUMENT CLUSTER IS STRIPPED. VEHICLE IS IN NON-RUNNING CONDITION. OVERALL CONDITION IS POOR.



R120,000

MARKET RELATED VALUE EX VAT

MERCEDES BENZ ANDARE MARCOPOLO 1000 BUS

VEHICLE DETAILS

YEAR: 2010
ENG: 457916U0939174
VIN 1: 9BM634061AB679901
VIN 2:
REG: ZDN506GP
ODO: 1420708
BANK:
ACC: 5000329 - 4916 - SAL038



R105,000

FORCED SALE VALUE EX VAT

CONDITION SUMMARY

DENTS, STONE CHIPS AND SCRATCHES NOTED ALL ROUND. LIGHTS ARE INTACT. WINDSCREEN IS INTACT. SEATS ARE INTACT. DASHBOARD AND INSTRUMENT CLUSTER IS STRIPPED. VEHICLE IS IN NON-RUNNING CONDITION. OVERALL CONDITION IS POOR.



R147,000

MARKET RELATED VALUE EX VAT

MAN LION EXPOLRER BUS

VEHICLE DETAILS

YEAR: 2009
ENG: 50521830202185
VIN 1: AAMHB40433PX22662
VIN 2:
REG: YPT286GP
ODO: 1000083
BANK:
ACC: 5000053 - 2002 - SAL041



R167,000

FORCED SALE VALUE EX VAT

CONDITION SUMMARY

DENTS, STONE CHIPS AND SCRATCHES NOTED ALL ROUND. FRONT GRILL IS DAMAGED. LIGHTS ARE INTACT. FRONT AND REAR BUMPER IS REMOVED. MIRRORS REMOVED. WINDSCREEN IS INTACT. SEATS ARE REMOVED. DASHBOARD AND INSTRUMENT CLUSTER IS STRIPPED. VEHICLE IS IN NON-RUNNING CONDITION. ENGINE IS STRIPPED. OVERALL CONDITION IS POOR.



R210,000

MARKET RELATED VALUE EX VAT

MERCEDES BENZ ANDARE MARCOPOLO 1000 BUS

VEHICLE DETAILS

YEAR: 2010
ENG: 457916U0939409
VIN 1: 9BM634061AB681888
VIN 2:
REG: ZDN349GP
ODO: 732216
BANK:
ACC: 5000605 - 4826 - SAL042



R150,000

FORCED SALE VALUE EX VAT

CONDITION SUMMARY

DENTS, STONE CHIPS AND SCRATCHES NOTED ALL ROUND. FRONT AND REAR LIGHTS ARE INTACT. WINDSCREEN IS INTACT. SEATS ARE INTACT. DASHBOARD AND INSTRUMENT CLUSTER IS STRIPPED. VEHICLE IS IN NON-RUNNING CONDITION. OVERALL CONDITION IS POOR.



R195,000

MARKET RELATED VALUE EX VAT

MERCEDES BENZ PARADISO 1200 BUS

VEHICLE DETAILS

YEAR: 2010
ENG: 457916U0938931
VIN 1: 9BM634061AB679808
VIN 2:
REG: ZBM427GP
ODO: 838075
BANK:
ACC: 5000287 - 5542 - SAL043



R111,000

FORCED SALE VALUE EX VAT

CONDITION SUMMARY

DENTS, STONE CHIPS AND SCRATCHES NOTED ALL ROUND. FRONT GRILL IS REMOVED. FRONT LIGHTS ARE REMOVED. WINDSCREEN IS INTACT. SEATS ARE INTACT. DASHBOARD AND INSTRUMENT CLUSTER IS STRIPPED. VEHICLE IS IN NON-RUNNING CONDITION. OVERALL CONDITION IS POOR.



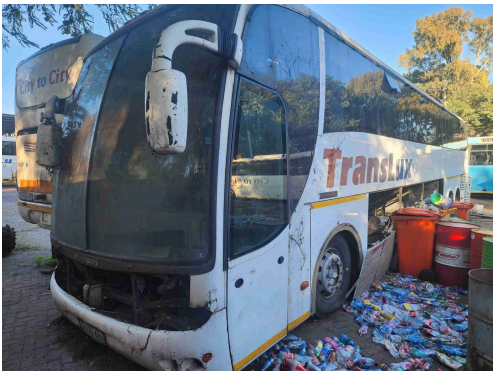
R147,000

MARKET RELATED VALUE EX VAT

MERCEDES BENZ PARADISO 1200 BUS

VEHICLE DETAILS

YEAR: 2010
ENG: 457916U0942047
VIN 1: 9BM634061AB693979
VIN 2:
REG: CA922494
ODO: 954715
BANK:
ACC: 5000734 - 5632 - SAL046



R111,000

FORCED SALE VALUE EX VAT

CONDITION SUMMARY

DENTS, STONE CHIPS AND SCRATCHES NOTED ALL ROUND. FRONT GRILL REMOVED. REAR BUMPER REMOVED. LIGHTS ARE REMOVED. WINDSCREEN IS INTACT. SEATS ARE INTACT. DASHBOARD AND INSTRUMENT CLUSTER IS STRIPPED. VEHICLE IS IN NON-RUNNING CONDITION. ENGINE IS STRIPPED. OVERALL CONDITION IS POOR.



R147,000

MARKET RELATED VALUE EX VAT

MERCEDES BENZ ANDARE MARCOPOLO 1000 BUS

VEHICLE DETAILS

YEAR: 2010
ENG: 457916U0938161
VIN 1: 9BM634061AB675689
VIN 2:
REG: ZBF494GP
ODO: 1034451
BANK:
ACC: 5000260 - 4785 - HAR232



R125,000

FORCED SALE VALUE EX VAT

CONDITION SUMMARY

DENTS, STONE CHIPS AND SCRATCHES NOTED ALL ROUND. FRONT AND REAR LIGHTS ARE INTACT. WINDSCREEN IS INTACT. SEATS ARE INTACT. DASHBOARD AND INSTRUMENT CLUSTER IS STRIPPED. VEHICLE IS IN NON-RUNNING CONDITION. OVERALL CONDITION IS POOR.



R175,000

MARKET RELATED VALUE EX VAT

MERCEDES BENZ ANDARE MARCOPOLO 1000 BUS

VEHICLE DETAILS

YEAR: 2010
ENG: 457916U0939180
VIN 1: 9BM634061AB680171
VIN 2:
REG: ZDN436GP
ODO: 588657
BANK:
ACC: 5000321 - 4914 - HAR233



R75,000

FORCED SALE VALUE EX VAT

CONDITION SUMMARY

ACCIDENT DAMAGE NOTED ON THE FRONT OF THE VEHICLE. FRONT LIGHTS ARE REMOVED. WINDSCREEN IS REMOVED. SEATS ARE INTACT. DASHBOARD AND INSTRUMENT CLUSTER IS STRIPPED. VEHICLE IS IN NON-RUNNING CONDITION. OVERALL CONDITION IS POOR.



R115,000

MARKET RELATED VALUE EX VAT

MERCEDES BENZ ANDARE MARCOPOLO 1000 BUS

VEHICLE DETAILS

YEAR: 2010
ENG: 457916U0938498
VIN 1: 9BM634061AB677195
VIN 2:
REG: ZDN584GP
ODO: 801154
BANK:
ACC: 5000341 - 4904 - HAR242



R100,000

FORCED SALE VALUE EX VAT

CONDITION SUMMARY

DENTS, STONE CHIPS AND SCRATCHES NOTED ALL ROUND. LIGHTS ARE INTACT. WINDSCREEN IS INTACT. SEATS ARE INTACT. DASHBOARD AND INSTRUMENT CLUSTER IS STRIPPED. ENGINE FAILURE. VEHICLE IS IN NON-RUNNING CONDITION. OVERALL CONDITION IS POOR.



R160,000

MARKET RELATED VALUE EX VAT

MERCEDES BENZ PARADISO 1200 BUS

VEHICLE DETAILS

YEAR: 2010
ENG: 457916U0942066
VIN 1: 9BM634061AB694054
VIN 2:
REG: FT66MCGP
ODO: 29139
BANK:
ACC: 500738 - 5643 - CT003



R127,000

FORCED SALE VALUE EX VAT

CONDITION SUMMARY

DENTS, STONE CHIPS AND SCRATCHES NOTED ALL ROUND. FRONT LIGHTS ARE STRIPPED. WINDSCREEN IS INTACT. SEATS ARE INTACT. DASHBOARD AND INSTRUMENT CLUSTER IS INTACT. ENGINE FAILURE. VEHICLE IS IN NON-RUNNING CONDITION. OVERALL CONDITION IS POOR.



R190,000

MARKET RELATED VALUE EX VAT

MERCEDES BENZ ANDARE MARCOPOLO 1000 BUS

VEHICLE DETAILS

YEAR: 2010
ENG: 457916U0938433
VIN 1: 9BM634061AB676826
VIN 2:
REG: FT76YKGP
ODO: 269337
BANK:
ACC: 5000149 - 4850 - CT004



R85,000

FORCED SALE VALUE EX VAT

CONDITION SUMMARY

DENTS, STONE CHIPS AND SCRATCHES NOTED ALL ROUND. ACCIDENT DAMAGE TO THE FRONT OF THE VEHICLE. BUMPER IS REMOVED. FRONT LIGHTS ARE REMOVED. WINDSCREEN IS REMOVED. SEATS ARE INTACT. DASHBOARD AND INSTRUMENT CLUSTER IS STRIPPED. VEHICLE IS IN NON-RUNNING CONDITION. OVERALL CONDITION IS POOR.



R127,000

MARKET RELATED VALUE EX VAT

MERCEDES BENZ ANDARE MARCOPOLO 1000 BUS

VEHICLE DETAILS

YEAR: 2010
ENG: 457916U0934770
VIN 1: 9BM6340619B652030
VIN 2:
REG: YXM929GP
ODO: 282827
BANK:
ACC: 5000226 - 4745 - CT014



R105,000

FORCED SALE VALUE EX VAT

CONDITION SUMMARY

DENTS, STONE CHIPS AND SCRATCHES NOTED ALL ROUND. FRONT BUMPER AND LIGHTS ARE REMOVED. WINDSCREEN IS INTACT. SEATS ARE INTACT. DASHBOARD AND INSTRUMENT CLUSTER IS INTACT. VEHICLE IS IN NON-RUNNING CONDITION. OVERALL CONDITION IS POOR.



R147,000

MARKET RELATED VALUE EX VAT

MERCEDES BENZ ANDARE MARCOPOLO 1000 BUS

VEHICLE DETAILS

YEAR: 2010
ENG: 457916U0939755
VIN 1: 9BM634061AB684011
VIN 2:
REG: ZDP095GP
ODO: 613090
BANK:
ACC: 5000361 - 4812 - CT021



R90,000

FORCED SALE VALUE EX VAT

CONDITION SUMMARY

DENTS, STONE CHIPS AND SCRATCHES NOTED ALL ROUND. LIGHTS ARE INTACT. WINDSCREEN IS INTACT. SEATS ARE INTACT. DASHBOARD AND INSTRUMENT CLUSTER IS INTACT. VEHICLE IS IN NON-RUNNING CONDITION. OVERALL CONDITION IS POOR.



R150,000

MARKET RELATED VALUE EX VAT

MERCEDES BENZ ANDARE MARCOPOLO 1000 BUS

VEHICLE DETAILS

YEAR: 2010
ENG: 457916U0940711
VIN 1: 9BM634061AB687493
VIN 2:
REG: ZGB980GP
ODO: 795900
BANK:
ACC: 5000643 - 4951 - CT022



R110,000

FORCED SALE VALUE EX VAT

CONDITION SUMMARY

DENTS, STONE CHIPS AND SCRATCHES NOTED ALL ROUND. LIGHTS ARE INTACT. WINDSCREEN IS INTACT. SEATS ARE INTACT. DASHBOARD AND INSTRUMENT CLUSTER IS INTACT. VEHICLE IS IN NON-RUNNING CONDITION. OVERALL CONDITION IS POOR.



R150,000

MARKET RELATED VALUE EX VAT

MERCEDES BENZ PARADISO 1200 BUS

VEHICLE DETAILS

YEAR: 2010
ENG: 457916U0942028
VIN 1: 9BM634061AB694049
VIN 2:
REG: CA922501
ODO: 1006064
BANK:
ACC: 5000732 - 5633 - ZAN001



R57,500

FORCED SALE VALUE EX VAT

CONDITION SUMMARY

DENTS, STONE CHIPS AND SCRATCHES NOTED ALL ROUND. FRONT AND REAR BUMPER, LIGHTS AND LID IS REMOVED. WINDSCREEN IS INTACT. SEATS ARE INTACT. DASHBOARD AND INSTRUMENT CLUSTER IS INTACT. ENGINE IS STRIPPED. VEHICLE IS IN NON-RUNNING CONDITION. OVERALL CONDITION IS POOR.



R95,000

MARKET RELATED VALUE EX VAT

MERCEDES BENZ ANDARE MARCOPOLO 1000 BUS

VEHICLE DETAILS

YEAR: 2010
ENG: 457916U0934873
VIN 1: 9BM6340619B652540
VIN 2:
REG: YYW145GP
ODO: 239774
BANK:
ACC: 5000252 - 4769 - DBN002



R95,000

FORCED SALE VALUE EX VAT

CONDITION SUMMARY

DENTS, STONE CHIPS AND SCRATCHES NOTED ALL ROUND. LIGHTS ARE REMOVED. WINDSCREEN IS INTACT. SEATS ARE INTACT. DASHBOARD AND INSTRUMENT CLUSTER IS STRIPPED. VEHICLE IS IN NON-RUNNING CONDITION. DIFF AND REAR AXLE NEEDS ATTENTION. OVERALL CONDITION IS POOR.



R130,000

MARKET RELATED VALUE EX VAT

MERCEDES BENZ ANDARE MARCOPOLO 1000 BUS

VEHICLE DETAILS

YEAR: 2010
ENG: 457916U0938114
VIN 1: 9BM634061AB675202
VIN 2:
REG: ZDN598GP
ODO: 615139
BANK:
ACC: 5000345 - 4901 - ZAN003



R57,500

FORCED SALE VALUE EX VAT

CONDITION SUMMARY

DENTS, STONE CHIPS AND SCRATCHES NOTED ALL ROUND. REAR BUMPER AND ENGINE LID REMOVED. REAR LIGHTS ARE REMOVED. WINDSCREEN IS INTACT. SEATS ARE INTACT. DASHBOARD AND INSTRUMENT CLUSTER IS STRIPPED. VEHICLE IS IN NON-RUNNING CONDITION. ENGINE REMOVED. OVERALL CONDITION IS POOR.



R97,500

MARKET RELATED VALUE EX VAT

MERCEDES BENZ PARADISO 1200 BUS

VEHICLE DETAILS

YEAR: 2009
ENG: 457916U0938338
VIN 1: 9BM634061AB676284
VIN 2:
REG: YVV800GP
ODO: 1311196
BANK:
ACC: 5000073 - 5504 - PRY003



R78,000

FORCED SALE VALUE EX VAT

CONDITION SUMMARY

DENTS, STONE CHIPS AND SCRATCHES NOTED ALL ROUND. REAR BUMPER IS REMOVED. LIGHTS ARE INTACT. WINDSCREEN IS INTACT. SEATS ARE INTACT. DASHBOARD AND INSTRUMENT CLUSTER IS STRIPPED. VEHICLE IS IN NON-RUNNING CONDITION. OVERALL CONDITION IS POOR.



R125,000

MARKET RELATED VALUE EX VAT

MERCEDES BENZ PARADISO 1200 BUS

VEHICLE DETAILS

YEAR: 2010
ENG: 457916U0938428
VIN 1: 9BM634061AB676822
VIN 2:
REG: YWC415GP
ODO: 1206149
BANK:
ACC: 5000074 - 5506 -



R111,000

FORCED SALE VALUE EX VAT

CONDITION SUMMARY

DENTS, STONE CHIPS AND SCRATCHES NOTED ALL ROUND. REAR BUMPER AND LIGHTS ARE REMOVED. WINDSCREEN IS INTACT. SEATS ARE INTACT. DASHBOARD AND INSTRUMENT CLUSTER IS INTACT. VEHICLE IS IN NON-RUNNING CONDITION. OVERALL CONDITION IS POOR.



R175,000

MARKET RELATED VALUE EX VAT

MERCEDES BENZ ANDARE MARCOPOLO 1000 BUS

VEHICLE DETAILS

YEAR: 2010
ENG: 457916AB678078
VIN 1: 9BM634061AB678078
VIN 2:
REG: ZFH573GP
ODO: 1390598
BANK:
ACC: 5000153 - 4858 - HAR022



R80,000

FORCED SALE VALUE EX VAT

CONDITION SUMMARY

DENTS, STONE CHIPS AND SCRATCHES NOTED ALL ROUND. LIGHTS ARE INTACT. WINDSCREEN IS INTACT. SEATS ARE INTACT. DASHBOARD AND INSTRUMENT CLUSTER IS INTACT. VEHICLE IS IN NON-RUNNING CONDITION. OVERALL CONDITION IS POOR.



R110,000

MARKET RELATED VALUE EX VAT

MERCEDES BENZ ANDARE MARCOPOLO 1000 BUS

VEHICLE DETAILS

YEAR: 2010
ENG: 457916U0939477
VIN 1: 9BM634061AB682576
VIN 2:
REG: ZFF229GP
ODO: 659676
BANK:
ACC: 5000633 - 4883 - HAR254



R90,000

FORCED SALE VALUE EX VAT

CONDITION SUMMARY

DENTS, STONE CHIPS AND SCRATCHES NOTED ALL ROUND. LIGHTS ARE INTACT. WINDSCREEN IS INTACT. SEATS ARE INTACT. DASHBOARD AND INSTRUMENT CLUSTER IS INTACT. DIFF IS STRIPPED VEHICLE IS IN NON-RUNNING CONDITION. OVERALL CONDITION IS POOR.



R147,000

MARKET RELATED VALUE EX VAT

MERCEDES BENZ PARADISO 1200 BUS

VEHICLE DETAILS

YEAR: 2010
ENG: 457916U0941012
VIN 1: 9BM634061AB687495
VIN 2:
REG: ZDP121GP
ODO: 1204312
BANK:
ACC: 5000370 - 5550 - ZDP121



R85,000

FORCED SALE VALUE EX VAT

CONDITION SUMMARY

DENTS, STONE CHIPS AND SCRATCHES NOTED ALL ROUND. REAR BUMPER IS REMOVED. LIGHTS ARE REMOVED. WINDSCREEN IS INTACT. SEATS ARE INTACT. DASHBOARD AND INSTRUMENT CLUSTER IS INTACT. ENGINE FAILURE. VEHICLE IS IN NON-RUNNING CONDITION. OVERALL CONDITION IS POOR.



R129,000

MARKET RELATED VALUE EX VAT

MERCEDES BENZ ANDARE MARCOPOLO 1000 BUS

VEHICLE DETAILS

YEAR: 2010
ENG: 457916U0938682
VIN 1: 9BM634061AB678787
VIN 2:
REG: ZBG873GP
ODO: 583886
BANK:
ACC: 5000264 - 4787 -



R100,000

FORCED SALE VALUE EX VAT

CONDITION SUMMARY

DENTS, STONE CHIPS AND SCRATCHES NOTED ALL ROUND. LIGHTS ARE INTACT. WINDSCREEN IS INTACT. SEATS ARE INTACT. DASHBOARD AND INSTRUMENT CLUSTER IS INTACT. VEHICLE IS IN NON-RUNNING CONDITION. OVERALL CONDITION IS POOR.



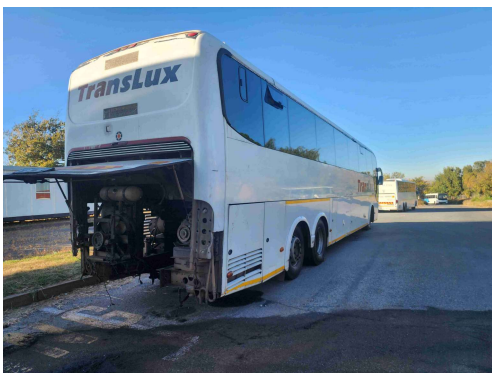
R150,000

MARKET RELATED VALUE EX VAT

MERCEDES BENZ PARADISO 1200 BUS

VEHICLE DETAILS

YEAR: 2010
ENG: 457916U0941158
VIN 1: 9BM634061AB690125
VIN 2:
REG: ZGF296GP
ODO: 1081653
BANK:
ACC: 5000719 - 5614 - HAR253



R111,000

FORCED SALE VALUE EX VAT

CONDITION SUMMARY

DENTS, STONE CHIPS AND SCRATCHES NOTED ALL ROUND. LIGHTS ARE INTACT. WINDSCREEN IS INTACT. SEATS ARE INTACT. DASHBOARD AND INSTRUMENT CLUSTER IS INTACT. ENGINE AND GEARBOX REMOVED. VEHICLE IS IN NON-RUNNING CONDITION. OVERALL CONDITION IS POOR.



R175,000

MARKET RELATED VALUE EX VAT

R 6,506,500

TOTAL FORCED SALE VALUE EX VAT

R9,544,500

TOTAL MARKET RELATED VALUE EX VAT



PARK VILLAGE AUCTIONS

Trusted by banks, respected by buyers

VALUATION

ESTATE REFERENCE: AUTOPAX PASSENGER SERVICES (SOC) (APRIL 2023) 3
ADDRESS: C/O AUTOPAX PASSENGER SERVICES (SOC), HARMONY, SALVOKOP, CAPE TOWN
CITY: JOHANNESBURG, PRETORIA AND CAPE TOWN
DATE: 24 April 2023
MASTER/ACC REF:
SEQ NO:

MERCEDES BENZ ANDARE MARCOPOLO 1000 BUS

VEHICLE DETAILS

YEAR: 2010
ENG: 457916U0940698
VIN 1: 9BM634061AB686313
VIN 2:
REG: ZGC112GP
ODO: 280233
BANK:
ACC: 5000648 - 4945 - HAR069

CONDITION SUMMARY

DENTS, STONE CHIPS AND SCRATCHES NOTED ALL ROUND. LIGHTS ARE INTACT. WINDSCREEN IS INTACT. SEATS ARE INTACT. DASHBOARD AND INSTRUMENT CLUSTER IS INTACT. VEHICLE IS IN NON-RUNNING CONDITION. OVERALL CONDITION IS POOR.



R105,000

FORCED SALE VALUE EX VAT



R145,000

MARKET RELATED VALUE EX VAT

MERCEDES BENZ ANDARE MARCOPOLO 1000 BUS

VEHICLE DETAILS

YEAR: 2010
ENG: 457916U0934565
VIN 1: 9BM6340619B650448
VIN 2:
REG: YTY474GP
ODO: 507166
BANK:
ACC: 5000115 - 4705 - HAR200



R90,000

FORCED SALE VALUE EX VAT

CONDITION SUMMARY

DENTS, STONE CHIPS AND SCRATCHES NOTED ALL ROUND. FRONT BUMPER IS REMOVED. LIGHTS ARE INTACT. WINDSCREEN IS INTACT. SEATS ARE INTACT. DASHBOARD AND INSTRUMENT CLUSTER IS INTACT. VEHICLE IS IN NON-RUNNING CONDITION. OVERALL CONDITION IS POOR.



R140,000

MARKET RELATED VALUE EX VAT

MERCEDES BENZ ANDARE MARCOPOLO 1000 BUS

VEHICLE DETAILS

YEAR: 2010
ENG: 457916U0939391
VIN 1: 9BM634061AB681883
VIN 2:
REG: ZDN226GP
ODO: 1275993
BANK:
ACC: 5000604 - 4863 - HAR220



R105,000

FORCED SALE VALUE EX VAT

CONDITION SUMMARY

DENTS, STONE CHIPS AND SCRATCHES NOTED ALL ROUND. LIGHTS ARE INTACT. WINDSCREEN IS INTACT. SEATS ARE INTACT. DASHBOARD AND INSTRUMENT CLUSTER IS INTACT. VEHICLE IS IN NON-RUNNING CONDITION. OVERALL CONDITION IS POOR.



R155,000

MARKET RELATED VALUE EX VAT

MERCEDES BENZ PARADISO 1200 BUS

VEHICLE DETAILS

YEAR: 2010
ENG: 457916U0941954
VIN 1: 9BM634061AB693974
VIN 2:
REG: ZGK598GP
ODO: 1199660
BANK:
ACC: 5000731 - 5638 - HAR238



R90,000

FORCED SALE VALUE EX VAT

CONDITION SUMMARY

DENTS, STONE CHIPS AND SCRATCHES NOTED ALL ROUND. LIGHTS ARE INTACT. WINDSCREEN IS INTACT. SEATS ARE INTACT. DASHBOARD AND INSTRUMENT CLUSTER IS INTACT. VEHICLE IS IN NON-RUNNING CONDITION. OVERALL CONDITION IS POOR.



R135,000

MARKET RELATED VALUE EX VAT

MERCEDES BENZ ANDARE MARCOPOLO 1000 BUS

VEHICLE DETAILS

YEAR: 2010
ENG: 457916U0940707
VIN 1: 9BM634061AB687490
VIN 2:
REG: ZGB481GP
ODO: 1091186
BANK:
ACC: 5000640 - 4954 - CT008



R75,000

FORCED SALE VALUE EX VAT

CONDITION SUMMARY

TYRES AND WHEEL RIMS REQUIRE REPLACEMENTS. DENTS, STONE CHIPS AND SCRATCHES NOTED ALL ROUND. FRONT AND REAR LIGHTS ARE REMOVED. WINDSCREEN IS REMOVED. SEATS ARE INTACT. DASHBOARD AND INSTRUMENT CLUSTER IS STRIPPED. VEHICLE IS IN NON-RUNNING CONDITION. OVERALL CONDITION IS POOR.



R115,000

MARKET RELATED VALUE EX VAT

MERCEDES BENZ PARADISO 1200 BUS

VEHICLE DETAILS

YEAR: 2010
ENG: 457916U0941976
VIN 1: 9BM634061AB693977
VIN 2:
REG: CA922534
ODO: 535530
BANK:
ACC: 5000730 - 5631 - CT010



R35,000

FORCED SALE VALUE EX VAT

CONDITION SUMMARY

REAR TYRES AND WHEEL RIMS REQUIRE REPLACEMENTS. DENTS, STONE CHIPS AND SCRATCHES NOTED ALL ROUND. FRONT GRILL, BUMPER AND LIGHTS ARE REMOVED. WINDSCREEN IS REMOVED. SEATS ARE INTACT. DASHBOARD AND INSTRUMENT CLUSTER IS STRIPPED. VEHICLE IS IN NON-RUNNING CONDITION. ENGINE IS STRIPPED. OVERALL CONDITION IS POOR.



R60,000

MARKET RELATED VALUE EX VAT

MERCEDES BENZ PARADISO 1200 BUS

VEHICLE DETAILS

YEAR: 2010
ENG: 457916U0939700
VIN 1: 9BM634061AB683079
VIN 2:
REG: ZDN458GP
ODO: 1056257
BANK:
ACC: 5000326 - 5594 - CT011



R75,000

FORCED SALE VALUE EX VAT

CONDITION SUMMARY

DENTS, STONE CHIPS AND SCRATCHES NOTED ALL ROUND. FRONT LIGHTS ARE REMOVED. WINDSCREEN IS REMOVED. DOOR IS REMOVED. SEATS ARE INTACT. DASHBOARD AND INSTRUMENT CLUSTER IS STRIPPED. VEHICLE IS IN NON-RUNNING CONDITION. OVERALL CONDITION IS POOR.



R120,000

MARKET RELATED VALUE EX VAT

MERCEDES BENZ ANDARE MARCOPOLO 1000 BUS

VEHICLE DETAILS

YEAR: 2010
ENG: 457916U0938680
VIN 1: 9BM634061AB679057
VIN 2:
REG: ZBH049GP
ODO: 1628795
BANK:
ACC: 5000268 - 4791 - CT012



R75,000

FORCED SALE VALUE EX VAT

CONDITION SUMMARY

TYRES ARE WELL USED. DENTS, STONE CHIPS AND SCRATCHES NOTED ALL ROUND. REAR HATCH IS REMOVED. FRONT AND REAR LIGHTS ARE REMOVED. WINDSCREEN IS INTACT. SEATS ARE INTACT. DASHBOARD AND INSTRUMENT CLUSTER IS INTACT. VEHICLE IS IN RUNNING CONDITION. OVERALL CONDITION IS FAIR.



R115,000

MARKET RELATED VALUE EX VAT

MERCEDES BENZ PARADISO 1200 BUS

VEHICLE DETAILS

YEAR: 2010
ENG: 457916U0941974
VIN 1: 9BM634061AB694044
VIN 2:
REG: CA922511
ODO: 1002234
BANK:
ACC: 500733 - 5634 - CT016



R75,000

FORCED SALE VALUE EX VAT

CONDITION SUMMARY

DENTS, STONE CHIPS AND SCRATCHES NOTED ALL ROUND. BONNET, FRONT GRILL AND BUMPER IS REMOVED. HEADLIGHTS ARE REMOVED. WINDSCREEN IS INTACT. PASSENGER WINDOW IS REMOVED. SEATS ARE INTACT. DASHBOARD AND INSTRUMENT CLUSTER IS STRIPPED. VEHICLE IS IN NON-RUNNING CONDITION. ENGINE IS STRIPPED. OVERALL CONDITION IS POOR.



R115,000

MARKET RELATED VALUE EX VAT

MERCEDES BENZ PARADISO 1200 BUS

VEHICLE DETAILS

YEAR: 2010
ENG: 457916U0939167
VIN 1: 9BM634061AB680170
VIN 2:
REG: FT83SJGP
ODO: 2164156
BANK:
ACC: 5000327 - 5590 - CT019



R95,000

FORCED SALE VALUE EX VAT

CONDITION SUMMARY

DENTS, STONE CHIPS AND SCRATCHES NOTED ALL ROUND. LIGHTS ARE INTACT. WINDSCREEN IS INTACT. SEATS ARE INTACT. DASHBOARD AND INSTRUMENT CLUSTER IS INTACT. VEHICLE IS IN NON-RUNNING CONDITION. OVERALL CONDITION IS POOR.



R140,000

MARKET RELATED VALUE EX VAT

MERCEDES BENZ ANDARE MARCOPOLO 1000 BUS

VEHICLE DETAILS

YEAR: 2010
ENG: 457916U0938773
VIN 1: 9BM634061AB679893
VIN 2:
REG: ZDN224GP
ODO: 1125934
BANK:
ACC: 5000308 - 4821 - CT026



R105,000

FORCED SALE VALUE EX VAT

CONDITION SUMMARY

DENTS, STONE CHIPS AND SCRATCHES NOTED ALL ROUND. LIGHTS ARE STRIPPED. WINDSCREEN IS INTACT. SEATS ARE INTACT. DASHBOARD AND INSTRUMENT CLUSTER IS STRIPPED. VEHICLE IS IN NON-RUNNING CONDITION. OVERALL CONDITION IS POOR.



R155,000

MARKET RELATED VALUE EX VAT

MERCEDES BENZ ANDARE MARCOPOLO 1000 BUS

VEHICLE DETAILS

YEAR: 2009
ENG: 457916U0934788
VIN 1: 9BM6340619B651621
VIN 2:
REG: YVP803GP
ODO: 1000544
BANK:
ACC: 5000014 - 4725 - KZN001



R85,000

FORCED SALE VALUE EX VAT

CONDITION SUMMARY

DENTS, STONE CHIPS AND SCRATCHES NOTED ALL ROUND. LIGHTS ARE INTACT. WINDSCREEN IS INTACT. SEATS ARE INTACT. DASHBOARD AND INSTRUMENT CLUSTER IS INTACT. VEHICLE IS IN NON-RUNNING CONDITION. OVERALL CONDITION IS POOR.



R140,000

MARKET RELATED VALUE EX VAT

MERCEDES BENZ PARADISO 1200 BUS

VEHICLE DETAILS

YEAR: 2010
ENG: 457916U0941073
VIN 1: 9BM634061AB687840
VIN 2:
REG: ZDP170GP
ODO: 1743594
BANK:
ACC: 5000684 - 5549 - KZN002



R90,000

FORCED SALE VALUE EX VAT

CONDITION SUMMARY

DENTS, STONE CHIPS AND SCRATCHES NOTED ALL ROUND. LIGHTS ARE INTACT. WINDSCREEN IS INTACT. SEATS ARE INTACT. DASHBOARD AND INSTRUMENT CLUSTER IS INTACT. VEHICLE IS IN NON-RUNNING CONDITION. OVERALL CONDITION IS POOR.

R140,000

MARKET RELATED VALUE EX VAT

MERCEDES BENZ PARADISO 1200 BUS

VEHICLE DETAILS

YEAR: 2010
ENG: 457916U0939273
VIN 1: 9BM634061AB681434
VIN 2:
REG: ZBF428GP
ODO: 2022645
BANK:
ACC: 5000254 - 5521 - HAR249



R115,000

FORCED SALE VALUE EX VAT

CONDITION SUMMARY

DENTS, STONE CHIPS AND SCRATCHES NOTED ALL ROUND. LIGHTS ARE REMOVED. WINDSCREEN IS INTACT. SEATS ARE INTACT. DASHBOARD AND INSTRUMENT CLUSTER IS STRIPPED AND DAMAGED. VEHICLE IS IN NON-RUNNING CONDITION. OVERALL CONDITION IS POOR.



R145,000

MARKET RELATED VALUE EX VAT

MERCEDES BENZ ANDARE MARCOPOLO 1000 BUS

VEHICLE DETAILS

YEAR: 2009
ENG: 457916U0934459
VIN 1: 9BM6340619B649766
VIN 2:
REG: YTY453GP
ODO: 295682
BANK:
ACC: 5000206 - 4700 - HAR001

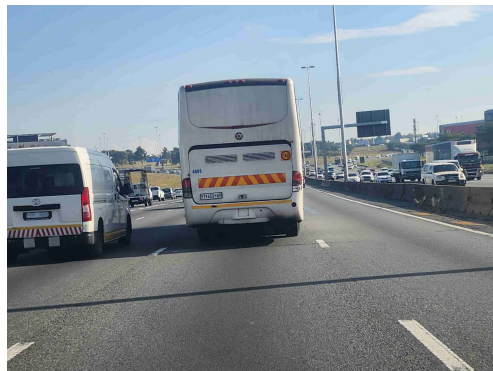


R110,000

FORCED SALE VALUE EX VAT

CONDITION SUMMARY

TYRES ARE WELL USED. DENTS, STONE CHIPS AND SCRATCHES NOTED ALL ROUND. REAR BUMPER IS DAMAGED. LIGHTS ARE INTACT. WINDSCREEN IS INTACT. SEATS ARE INTACT. DASHBOARD AND INSTRUMENT CLUSTER IS INTACT. VEHICLE IS IN RUNNING CONDITION. OVERALL CONDITION IS FAIR.



R155,000

MARKET RELATED VALUE EX VAT

MERCEDES BENZ PARADISO 1200 BUS

VEHICLE DETAILS

YEAR: 2010
ENG: 457916U0938696
VIN 1: 9BM634061AB679328
VIN 2:
REG: ZDP018GP
ODO: 1023506
BANK:
ACC: 5000347 - 5589 -



R111,000

FORCED SALE VALUE EX VAT

R 1,436,000

TOTAL FORCED SALE VALUE EX VAT

CONDITION SUMMARY

ACCIDENT DAMAGE NOTED ALL ROUND. ALL WINDOWS ARE BROKEN. SEATS ARE INTACT. INSTRUMENT CLUSTER ARE DAMAGED. VEHICLE IS A NON-RUNNER. OVERALL CONDITION IS POOR.



R151,000

MARKET RELATED VALUE EX VAT

R2,126,000

TOTAL MARKET RELATED VALUE EX VAT



PARK VILLAGE AUCTIONS

Trusted by banks, respected by buyers

VALUATION

ESTATE REFERENCE: AUTOPAX PASSENGER SERVICES (SOC) (APRIL 2023)
ADDRESS: C/O AUTOPAX PASSENGER SERVICES (SOC), HARMONY, SALVOKOP, CAPE TOWN
CITY: JOHANNESBURG, PRETORIA AND CAPE TOWN
DATE: 24 April 2023
MASTER/ACC REF:
SEQ NO:

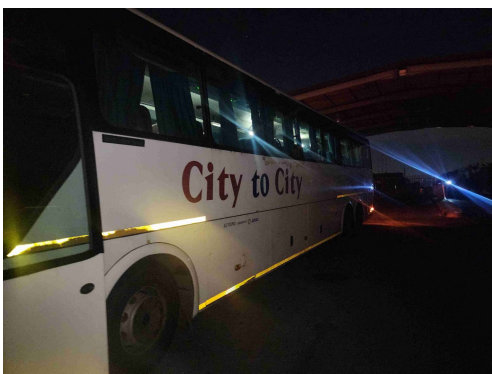
MERCEDES BENZ ANDARE MARCOPOLO 1000 BUS

VEHICLE DETAILS

YEAR: 2010
ENG: 457916U0941032
VIN 1: 9BM634061AB687491
VIN 2:
REG: ZGC693GP
ODO: 921700
BANK:
ACC: 5000656 - 4938 - HAR010

CONDITION SUMMARY

TYRES ARE WELL USED. DENTS, STONE CHIPS AND SCRATCHES NOTED ALL ROUND. LIGHTS ARE INTACT. WINDSCREEN IS INTACT. SEATS ARE INTACT. DASHBOARD AND INSTRUMENT CLUSTER IS INTACT. VEHICLE IS IN RUNNING CONDITION. OVERALL CONDITION IS FAIR.



R300,000

FORCED SALE VALUE EX VAT



R385,000

MARKET RELATED VALUE EX VAT

MERCEDES BENZ PARADISO 1200 BUS

VEHICLE DETAILS

YEAR: 2010
ENG: 457916U0940186
VIN 1: 9BM634061AB685747
VIN 2:
REG: ZDP097GP
ODO: 1490210
BANK:
ACC: 5000363 - 5585 - HAR064



R400,000

FORCED SALE VALUE EX VAT

CONDITION SUMMARY

TYRES ARE WELL USED. DENTS, STONE CHIPS AND SCRATCHES NOTED ALL ROUND. LIGHTS ARE INTACT. WINDSCREEN IS INTACT. SEATS ARE INTACT. DASHBOARD AND INSTRUMENT CLUSTER IS INTACT. VEHICLE IS IN RUNNING CONDITION. OVERALL CONDITION IS FAIR.



R510,000

MARKET RELATED VALUE EX VAT

MERCEDES BENZ PARADISO 1200 BUS

VEHICLE DETAILS

YEAR: 2010
ENG: 4597916U0941129
VIN 1: 9BM634061AB690136
VIN 2:
REG: ZHV537GP
ODO: 751310
BANK:
ACC: 5000748 - 5670 - HAR066



R435,000

FORCED SALE VALUE EX VAT

CONDITION SUMMARY

TYRES ARE WELL USED. DENTS, STONE CHIPS AND SCRATCHES NOTED ALL ROUND. LIGHTS ARE INTACT. WINDSCREEN IS INTACT. SEATS ARE INTACT. DASHBOARD AND INSTRUMENT CLUSTER IS INTACT. VEHICLE IS IN RUNNING CONDITION. OVERALL CONDITION IS FAIR.



R550,000

MARKET RELATED VALUE EX VAT

MERCEDES BENZ ANDARE MARCOPOLO 1000 BUS

VEHICLE DETAILS

YEAR: 2010
ENG: 457916U0939415
VIN 1: 9BM634061AB682056
VIN 2:
REG: ZDP045GP
ODO: 1610290
BANK:
ACC: 5000353 - 4813 - HAR201



R200,000

FORCED SALE VALUE EX VAT

CONDITION SUMMARY

TYRES ARE WELL USED. DENTS, STONE CHIPS AND SCRATCHES NOTED ALL ROUND. LIGHTS ARE INTACT. WINDSCREEN IS INTACT. SEATS ARE INTACT. DASHBOARD AND INSTRUMENT CLUSTER IS INTACT. VEHICLE IS IN RUNNING CONDITION. OVERALL CONDITION IS FAIR.



R285,000

MARKET RELATED VALUE EX VAT

MERCEDES BENZ ANDARE MARCOPOLO 1000 BUS

VEHICLE DETAILS

YEAR: 2010
ENG: 457916U0938554
VIN 1: 9BM634061AB677763
VIN 2:
REG: ZBG977GP
ODO: 1078050
BANK:
ACC: 5000266 - 4789 - HAR207



R305,000

FORCED SALE VALUE EX VAT

CONDITION SUMMARY

TYRES ARE WELL USED. DENTS, STONE CHIPS AND SCRATCHES NOTED ALL ROUND. LIGHTS ARE INTACT. WINDSCREEN IS INTACT. SEATS ARE INTACT. DASHBOARD AND INSTRUMENT CLUSTER IS INTACT. VEHICLE IS IN RUNNING CONDITION. OVERALL CONDITION IS FAIR.



R385,000

MARKET RELATED VALUE EX VAT

MERCEDES BENZ ANDARE MARCOPOLO 1000 BUS

VEHICLE DETAILS

YEAR: 2010
ENG: 457916U0938461
VIN 1: 9BM634061AB677987
VIN 2:
REG: ZDN543GP
ODO: 562182
BANK:
ACC: 5000337 - 4903 - HAR214



R210,000

FORCED SALE VALUE EX VAT

CONDITION SUMMARY

TYRES ARE WELL USED. DENTS, STONE CHIPS AND SCRATCHES NOTED ALL ROUND. LIGHTS ARE INTACT. WINDSCREEN IS INTACT. SEATS ARE INTACT. DASHBOARD AND INSTRUMENT CLUSTER IS INTACT. VEHICLE IS IN RUNNING CONDITION. OVERALL CONDITION IS FAIR.



R295,000

MARKET RELATED VALUE EX VAT

MERCEDES BENZ PARADISO 1200 BUS

VEHICLE DETAILS

YEAR: 2010
ENG: 457916U0939582
VIN 1: 9BM634061AB682478
VIN 2:
REG: ZBL519GP
ODO: 1726721
BANK:
ACC: 5000089 - 5534 - SAL001



R320,000

FORCED SALE VALUE EX VAT

CONDITION SUMMARY

TYRES ARE WELL USED. DENTS, STONE CHIPS AND SCRATCHES NOTED ALL ROUND. LIGHTS ARE INTACT. WINDSCREEN IS INTACT. SEATS ARE INTACT. DASHBOARD AND INSTRUMENT CLUSTER IS INTACT. VEHICLE IS IN RUNNING CONDITION. OVERALL CONDITION IS FAIR.



R410,000

MARKET RELATED VALUE EX VAT

MERCEDES BENZ ANDARE MARCOPOLO 1000 BUS

VEHICLE DETAILS

YEAR: 2009
ENG: 457916U0934561
VIN 1: 9BM6340619B650433
VIN 2:
REG: YVD557GP
ODO: 1592723
BANK:
ACC: 5000007 - 4718 - SAL004



R195,000

FORCED SALE VALUE EX VAT

CONDITION SUMMARY

TYRES ARE WELL USED. DENTS, STONE CHIPS AND SCRATCHES NOTED ALL ROUND. LIGHTS ARE INTACT. WINDSCREEN IS INTACT. SEATS ARE INTACT. DASHBOARD AND INSTRUMENT CLUSTER IS INTACT. VEHICLE IS IN RUNNING CONDITION. OVERALL CONDITION IS FAIR.



R277,000

MARKET RELATED VALUE EX VAT

MERCEDES BENZ PARADISO 1200 BUS

VEHICLE DETAILS

YEAR: 2010
ENG: 457916U0941546
VIN 1: 9BM634061AB691332
VIN 2:
REG: ZGX538GP
ODO: 440665
BANK:
ACC: 5000787 - 5652 - SAL009

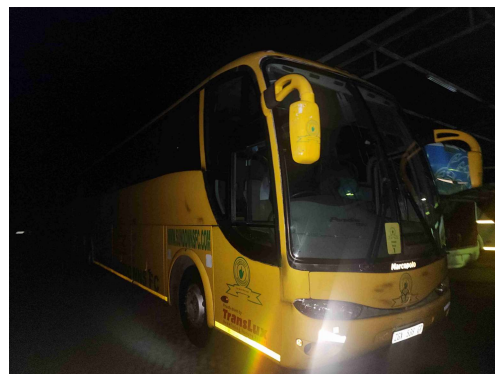


R475,000

FORCED SALE VALUE EX VAT

CONDITION SUMMARY

TYRES ARE WELL USED. DENTS, STONE CHIPS AND SCRATCHES NOTED ALL ROUND. LIGHTS ARE INTACT. WINDSCREEN IS INTACT. SEATS ARE INTACT. DASHBOARD AND INSTRUMENT CLUSTER IS INTACT. VEHICLE IS IN RUNNING CONDITION. OVERALL CONDITION IS FAIR.



R620,000

MARKET RELATED VALUE EX VAT

MERCEDES BENZ PARADISO 1200 BUS

VEHICLE DETAILS

YEAR: 2010
ENG: 457916U0941057
VIN 1: 9BM634061AB687497
VIN 2:
REG: ZGF068GP
ODO: 1184987
BANK:
ACC: 5000162 - 5595 - SAL010



R400,000

FORCED SALE VALUE EX VAT

CONDITION SUMMARY

TYRES ARE WELL USED. DENTS, STONE CHIPS AND SCRATCHES NOTED ALL ROUND. LIGHTS ARE INTACT. WINDSCREEN IS INTACT. SEATS ARE INTACT. DASHBOARD AND INSTRUMENT CLUSTER IS INTACT. VEHICLE IS IN RUNNING CONDITION. OVERALL CONDITION IS FAIR.



R510,000

MARKET RELATED VALUE EX VAT

MERCEDES BENZ PARADISO 1200 BUS

VEHICLE DETAILS

YEAR: 2010
ENG: 457916U0939163
VIN 1: 9BM634061AB680549
VIN 2:
REG: ZBL431GP
ODO: 1563440
BANK:
ACC: 5000065 - 5528 - SAL021



R315,000

FORCED SALE VALUE EX VAT

CONDITION SUMMARY

TYRES ARE WELL USED. DENTS, STONE CHIPS AND SCRATCHES NOTED ALL ROUND. LIGHTS ARE INTACT. WINDSCREEN IS INTACT. SEATS ARE INTACT. DASHBOARD AND INSTRUMENT CLUSTER IS INTACT. VEHICLE IS IN RUNNING CONDITION. OVERALL CONDITION IS FAIR.



R405,000

MARKET RELATED VALUE EX VAT

MERCEDES BENZ ANDARE MARCOPOLO 1000 BUS

VEHICLE DETAILS

YEAR: 2010
ENG: 457916U0940288
VIN 1: 9BM634061AB686009
VIN 2:
REG: ZGF070GP
ODO: 941820
BANK:
ACC: 5000667 - 4926 - SAL022



R300,000

FORCED SALE VALUE EX VAT

CONDITION SUMMARY

TYRES ARE WELL USED. DENTS, STONE CHIPS AND SCRATCHES NOTED ALL ROUND. LIGHTS ARE INTACT. WINDSCREEN IS INTACT. SEATS ARE INTACT. DASHBOARD AND INSTRUMENT CLUSTER IS INTACT. VEHICLE IS IN RUNNING CONDITION. OVERALL CONDITION IS FAIR.



R389,000

MARKET RELATED VALUE EX VAT

MERCEDES BENZ PARADISO 1200 BUS

VEHICLE DETAILS

YEAR: 2010
ENG: 457916U0941482
VIN 1: 9BM634061AB683609
VIN 2:
REG: ZGF037GP
ODO: 1433109
BANK:
ACC: 5000701 - 5602 - SAL032



R402,000

FORCED SALE VALUE EX VAT

CONDITION SUMMARY

TYRES ARE WELL USED. DENTS, STONE CHIPS AND SCRATCHES NOTED ALL ROUND. LIGHTS ARE INTACT. WINDSCREEN IS INTACT. SEATS ARE INTACT. DASHBOARD AND INSTRUMENT CLUSTER IS INTACT. VEHICLE IS IN RUNNING CONDITION. OVERALL CONDITION IS FAIR.



R507,000

MARKET RELATED VALUE EX VAT

MERCEDES BENZ ANDARE MARCOPOLO 1000 BUS

VEHICLE DETAILS

YEAR: 2010
ENG: 457916U0939610
VIN 1: 9BM634061AB683609
VIN 2:
REG: ZDN185GP
ODO: 1717755
BANK:
ACC: 5000302 - 4827 - SAL033



R265,000

FORCED SALE VALUE EX VAT

CONDITION SUMMARY

TYRES ARE WELL USED. DENTS, STONE CHIPS AND SCRATCHES NOTED ALL ROUND. LIGHTS ARE INTACT. WINDSCREEN IS INTACT. SEATS ARE INTACT. DASHBOARD AND INSTRUMENT CLUSTER IS INTACT. VEHICLE IS IN RUNNING CONDITION. OVERALL CONDITION IS FAIR.



R350,000

MARKET RELATED VALUE EX VAT

MERCEDES BENZ ANDARE MARCOPOLO 1000 BUS

VEHICLE DETAILS

YEAR: 2009
ENG: 457916U0934529
VIN 1: 9BM6340619B650431
VIN 2:
REG: YVP693GP
ODO: 1417296
BANK:
ACC: 5000008 - 4719 - SAL035



R200,000

FORCED SALE VALUE EX VAT

CONDITION SUMMARY

DENTS, STONE CHIPS AND SCRATCHES NOTED ALL ROUND. LIGHTS ARE INTACT. WINDSCREEN IS INTACT. SEATS ARE INTACT. DASHBOARD AND INSTRUMENT CLUSTER IS INTACT. VEHICLE IS IN RUNNING CONDITION. OVERALL CONDITION IS FAIR.



R285,000

MARKET RELATED VALUE EX VAT

MERCEDES BENZ PARADISO 1200 BUS

VEHICLE DETAILS

YEAR: 2010
ENG: 457916U0939397
VIN 1: 9BM634061AB682476
VIN 2:
REG: ZBL747GP
ODO: 1252971
BANK:
ACC: 5000092 - 5537 - SAL037



R395,000

FORCED SALE VALUE EX VAT

CONDITION SUMMARY

TYRES ARE WELL USED. DENTS, STONE CHIPS AND SCRATCHES NOTED ALL ROUND. LIGHTS ARE INTACT. WINDSCREEN IS INTACT. SEATS ARE INTACT. DASHBOARD AND INSTRUMENT CLUSTER IS INTACT. VEHICLE IS IN RUNNING CONDITION. OVERALL CONDITION IS FAIR.



R510,000

MARKET RELATED VALUE EX VAT

MERCEDES BENZ PARADISO 1200 BUS

VEHICLE DETAILS

YEAR: 2010
ENG: 457916U0941107
VIN 1: 9BM634061AB689732
VIN 2:
REG: ZGF032GP
ODO: 1548300
BANK:
ACC: 5000700 - 5613 - SAL039



R400,000

FORCED SALE VALUE EX VAT

CONDITION SUMMARY

TYRES ARE WELL USED. DENTS, STONE CHIPS AND SCRATCHES NOTED ALL ROUND. LIGHTS ARE INTACT. WINDSCREEN IS INTACT. SEATS ARE INTACT. DASHBOARD AND INSTRUMENT CLUSTER IS INTACT. VEHICLE IS IN RUNNING CONDITION. OVERALL CONDITION IS FAIR.



R510,000

MARKET RELATED VALUE EX VAT

MERCEDES BENZ PARADISO 1200 BUS

VEHICLE DETAILS

YEAR: 2010
ENG: 457916U0939778
VIN 1: 9BM634061AB684273
VIN 2:
REG: ZDP079GP
ODO: 1490210
BANK:
ACC: 5000358 - 5561 - SAL045



R405,000

FORCED SALE VALUE EX VAT

CONDITION SUMMARY

TYRES ARE WELL USED. DENTS, STONE CHIPS AND SCRATCHES NOTED ALL ROUND. LIGHTS ARE INTACT. WINDSCREEN IS INTACT. SEATS ARE INTACT. DASHBOARD AND INSTRUMENT CLUSTER IS INTACT. VEHICLE IS IN RUNNING CONDITION. OVERALL CONDITION IS FAIR.



R515,000

MARKET RELATED VALUE EX VAT

MERCEDES BENZ PARADISO 1200 BUS

VEHICLE DETAILS

YEAR: 2010
ENG: 457916U0938923
VIN 1: 9BM634061AB679060
VIN 2:
REG: ZBM516GP
ODO: 1035038
BANK:
ACC: 5000291 - 5543 - HAR217



R465,000

FORCED SALE VALUE EX VAT

CONDITION SUMMARY

TYRES ARE WELL USED. DENTS, STONE CHIPS AND SCRATCHES NOTED ALL ROUND. LIGHTS ARE INTACT. WINDSCREEN IS INTACT. SEATS ARE INTACT. DASHBOARD AND INSTRUMENT CLUSTER IS INTACT. VEHICLE IS IN RUNNING CONDITION. OVERALL CONDITION IS FAIR.



R600,000

MARKET RELATED VALUE EX VAT

MERCEDES BENZ ANDARE MARCOPOLO 1000 BUS

VEHICLE DETAILS

YEAR: 2010
ENG: 457916U0938342
VIN 1: 9BM634061AB676285
VIN 2:
REG: ZFH371GP
ODO: 578545
BANK:
ACC: 5000146 - 4851 - HAR239



R200,000

FORCED SALE VALUE EX VAT

CONDITION SUMMARY

TYRES ARE WELL USED. DENTS, STONE CHIPS AND SCRATCHES NOTED ALL ROUND. LIGHTS ARE INTACT. WINDSCREEN IS INTACT. SEATS ARE INTACT. DASHBOARD AND INSTRUMENT CLUSTER IS INTACT. VEHICLE IS IN RUNNING CONDITION. OVERALL CONDITION IS FAIR.



R285,000

MARKET RELATED VALUE EX VAT

MERCEDES BENZ ANDARE MARCOPOLO 1000 BUS

VEHICLE DETAILS

YEAR: 2010
ENG: 457916U0938927
VIN 1: 9BM634061AB679815
VIN 2:
REG: ZDN514GP
ODO: 1404483
BANK:
ACC: 5000332 - 4909 - HAR240

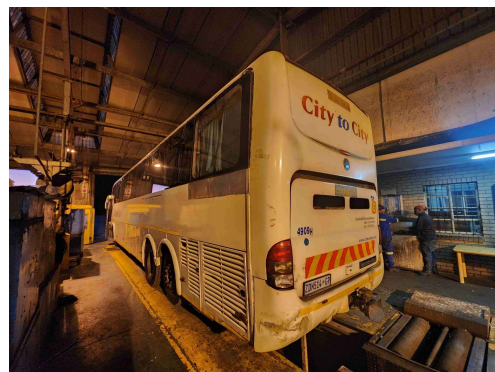


R235,000

FORCED SALE VALUE EX VAT

CONDITION SUMMARY

TYRES ARE WELL USED. DENTS, STONE CHIPS AND SCRATCHES NOTED ALL ROUND. LIGHTS ARE INTACT. WINDSCREEN IS INTACT. SEATS ARE INTACT. DASHBOARD AND INSTRUMENT CLUSTER IS INTACT. VEHICLE IS IN RUNNING CONDITION. OVERALL CONDITION IS FAIR.



R310,000

MARKET RELATED VALUE EX VAT

MERCEDES BENZ PARADISO 1200 BUS

VEHICLE DETAILS

YEAR: 2010
ENG: 457916U0941298
VIN 1: 9BM634061AB690542
VIN 2:
REG: ZHN633GP
ODO: 399476
BANK:
ACC: 5000747 - 5647 - HAR241



R510,000

FORCED SALE VALUE EX VAT

CONDITION SUMMARY

TYRES ARE WELL USED. DENTS, STONE CHIPS AND SCRATCHES NOTED ALL ROUND. LIGHTS ARE INTACT. WINDSCREEN IS INTACT. SEATS ARE INTACT. DASHBOARD AND INSTRUMENT CLUSTER IS INTACT. VEHICLE IS IN RUNNING CONDITION. OVERALL CONDITION IS FAIR.



R660,000

MARKET RELATED VALUE EX VAT

MERCEDES BENZ ANDARE MARCOPOLO 1000 BUS

VEHICLE DETAILS

YEAR: 2010
ENG: 457916U0934533
VIN 1: 9BM6340619B650023
VIN 2:
REG: YYW063GP
ODO: 715935
BANK:
ACC: 5000004 - 4768 - CT002



R197,000

FORCED SALE VALUE EX VAT

CONDITION SUMMARY

TYRES ARE WELL USED. DENTS, STONE CHIPS AND SCRATCHES NOTED ALL ROUND. LIGHTS ARE INTACT. WINDSCREEN IS INTACT. SEATS ARE INTACT. DASHBOARD AND INSTRUMENT CLUSTER IS INTACT. VEHICLE IS IN RUNNING CONDITION. OVERALL CONDITION IS FAIR.



R280,000

MARKET RELATED VALUE EX VAT

MERCEDES BENZ PARADISO 1200 BUS

VEHICLE DETAILS

YEAR: 2010
ENG: 457916U0940682
VIN 1: 9BM634061AB686317
VIN 2:
REG: ZDP114GP
ODO: 821892
BANK:
ACC: 5000368 - 5551 - CT017



R115,000

FORCED SALE VALUE EX VAT

CONDITION SUMMARY

DENTS, STONE CHIPS AND SCRATCHES NOTED ALL ROUND. LIGHTS ARE INTACT. WINDSCREEN IS INTACT. SEATS ARE INTACT. DASHBOARD AND INSTRUMENT CLUSTER IS INTACT. ENGINE FAILURE. VEHICLE IS IN NON-RUNNING CONDITION. OVERALL CONDITION IS POOR.



R185,000

MARKET RELATED VALUE EX VAT

MERCEDES BENZ ANDARE MARCOPOLO 1000 BUS

VEHICLE DETAILS

YEAR: 2010
ENG: 457916U0941109
VIN 1: 9BM634061AB687839
VIN 2:
REG: ZGX705GP
ODO: 2084140
BANK:
ACC: 5000755 - 4979 - CT023



R230,000

FORCED SALE VALUE EX VAT

CONDITION SUMMARY

TYRES ARE WELL USED. DENTS, STONE CHIPS AND SCRATCHES NOTED ALL ROUND. LIGHTS ARE INTACT. WINDSCREEN IS INTACT. SEATS ARE INTACT. DASHBOARD AND INSTRUMENT CLUSTER IS INTACT. VEHICLE IS IN RUNNING CONDITION. OVERALL CONDITION IS FAIR.



R295,000

MARKET RELATED VALUE EX VAT

MERCEDES BENZ PARADISO 1200 BUS

VEHICLE DETAILS

YEAR: 2010
ENG: 457916U0939879
VIN 1: 9BM634061AB684573
VIN 2:
REG: ZDP096GP
ODO: 1769915
BANK:
ACC: 5000362 - 5583 - CT024



R180,000

FORCED SALE VALUE EX VAT

CONDITION SUMMARY

TYRES ARE WELL USED. DENTS, STONE CHIPS AND SCRATCHES NOTED ALL ROUND. LIGHTS ARE INTACT. WINDSCREEN IS INTACT. SEATS ARE INTACT. DASHBOARD AND INSTRUMENT CLUSTER IS INTACT. VEHICLE IS IN RUNNING CONDITION. OVERALL CONDITION IS FAIR.



R270,000

MARKET RELATED VALUE EX VAT

MERCEDES BENZ PARADISO 1200 BUS

VEHICLE DETAILS

YEAR: 2010
ENG: 457916U0940257
VIN 1: 9BM634061AB686015
VIN 2:
REG: ZGX417GP
ODO: 1051375
BANK:
ACC: 5000789 - 5666 - CT025



R111,000

FORCED SALE VALUE EX VAT

CONDITION SUMMARY

DENTS, STONE CHIPS AND SCRATCHES NOTED ALL ROUND. LIGHTS ARE INTACT. WINDSCREEN IS INTACT. SEATS ARE INTACT. DASHBOARD AND INSTRUMENT CLUSTER IS STRIPPED. VEHICLE IS IN NON-RUNNING CONDITION. OVERALL CONDITION IS POOR.



R175,000

MARKET RELATED VALUE EX VAT

MERCEDES BENZ ANDARE MARCOPOLO 1000 BUS

VEHICLE DETAILS

YEAR: 2010
ENG: 457916U0938339
VIN 1: 9BM634061AB675867
VIN 2:
REG: ZFG988GP
ODO: 525746
BANK:
ACC: 5000145 - 4845 - HAR244



R265,000

FORCED SALE VALUE EX VAT

CONDITION SUMMARY

TYRES ARE WELL USED. DENTS, STONE CHIPS AND SCRATCHES NOTED ALL ROUND. LIGHTS ARE INTACT. WINDSCREEN IS INTACT. SEATS ARE INTACT. DASHBOARD AND INSTRUMENT CLUSTER IS INTACT. VEHICLE IS IN RUNNING CONDITION. OVERALL CONDITION IS FAIR.



R350,000

MARKET RELATED VALUE EX VAT

MERCEDES BENZ PARADISO 1200 BUS

VEHICLE DETAILS

YEAR: 2010
ENG: 457916U0941453
VIN 1: 9BM634061AB690954
VIN 2:
REG: ZHN607GP
ODO: 33691
BANK:
ACC: 5000745 - 5593 - HAR248



R400,000

FORCED SALE VALUE EX VAT

CONDITION SUMMARY

TYRES ARE WELL USED. DENTS, STONE CHIPS AND SCRATCHES NOTED ALL ROUND. LIGHTS ARE INTACT. WINDSCREEN IS INTACT. SEATS ARE INTACT. DASHBOARD AND INSTRUMENT CLUSTER IS INTACT. VEHICLE IS IN RUNNING CONDITION. OVERALL CONDITION IS FAIR.



R510,000

MARKET RELATED VALUE EX VAT

MERCEDES BENZ PARADISO 1200 BUS

VEHICLE DETAILS

YEAR: 2010
ENG: 457916U0941288
VIN 1: 9BM634061AB690144
VIN 2:
REG: ZFD301GP
ODO: 1522014
BANK:
ACC: 5000690 - 5577 - HAR250



R250,000

FORCED SALE VALUE EX VAT

CONDITION SUMMARY

TYRES ARE WELL USED. DENTS, STONE CHIPS AND SCRATCHES NOTED ALL ROUND. LIGHTS ARE INTACT. WINDSCREEN IS INTACT. SEATS ARE INTACT. DASHBOARD AND INSTRUMENT CLUSTER IS INTACT. VEHICLE IS IN RUNNING CONDITION. OVERALL CONDITION IS FAIR.



R330,000

MARKET RELATED VALUE EX VAT

MERCEDES BENZ ANDARE MARCOPOLO 1000 BUS

VEHICLE DETAILS

YEAR: 2010
ENG: 457916U0938898
VIN 1: 9BM634061AB679899
VIN 2:
REG: ZHN287GP
ODO: 666490
BANK:
ACC: 5000679 - 4958 - HAR251



R230,000

FORCED SALE VALUE EX VAT

CONDITION SUMMARY

TYRES ARE WELL USED. DENTS, STONE CHIPS AND SCRATCHES NOTED ALL ROUND. LIGHTS ARE INTACT. WINDSCREEN IS INTACT. SEATS ARE INTACT. DASHBOARD AND INSTRUMENT CLUSTER IS INTACT. VEHICLE IS IN RUNNING CONDITION. OVERALL CONDITION IS FAIR.



R285,000

MARKET RELATED VALUE EX VAT

MERCEDES BENZ ANDARE MARCOPOLO 1000 BUS

VEHICLE DETAILS

YEAR: 2010
ENG: 457916U0941083
VIN 1: 9BM634061AB687837
VIN 2:
REG: ZGX703GP
ODO: 1096860
BANK:
ACC: 5000766 - 4983 - HAR252



R250,000

FORCED SALE VALUE EX VAT

CONDITION SUMMARY

TYRES ARE WELL USED. DENTS, STONE CHIPS AND SCRATCHES NOTED ALL ROUND. LIGHTS ARE INTACT. WINDSCREEN IS INTACT. SEATS ARE INTACT. DASHBOARD AND INSTRUMENT CLUSTER IS INTACT. VEHICLE IS IN RUNNING CONDITION. OVERALL CONDITION IS FAIR.



R350,000

MARKET RELATED VALUE EX VAT

MERCEDES BENZ ANDARE MARCOPOLO 1000 BUS

VEHICLE DETAILS

YEAR: 2010
ENG: 457916AB686311
VIN 1: 9BM634061AB686311
VIN 2:
REG: ZGD339GP
ODO: 1773437
BANK:
ACC: 5000659 - 4935 - SAL049



R265,000

FORCED SALE VALUE EX VAT

CONDITION SUMMARY

TYRES ARE WELL USED. DENTS, STONE CHIPS AND SCRATCHES NOTED ALL ROUND. LIGHTS ARE INTACT. WINDSCREEN IS INTACT. SEATS ARE INTACT. DASHBOARD AND INSTRUMENT CLUSTER IS INTACT. VEHICLE IS IN RUNNING CONDITION. OVERALL CONDITION IS FAIR.



R355,000

MARKET RELATED VALUE EX VAT

MERCEDES BENZ PARADISO 1200 BUS

VEHICLE DETAILS

YEAR: 2010
ENG: 457916U0939175
VIN 1: 9BM634061AB680557
VIN 2:
REG: ZBF464GP
ODO: 777485
BANK:
ACC: 5000256 - 5522 - SAL047



R445,000

FORCED SALE VALUE EX VAT

CONDITION SUMMARY

TYRES ARE WELL USED. DENTS, STONE CHIPS AND SCRATCHES NOTED ALL ROUND. LIGHTS ARE INTACT. WINDSCREEN IS INTACT. SEATS ARE INTACT. DASHBOARD AND INSTRUMENT CLUSTER IS INTACT. VEHICLE IS IN RUNNING CONDITION. OVERALL CONDITION IS FAIR.



R560,000

MARKET RELATED VALUE EX VAT

MERCEDES BENZ ANDARE MARCOPOLO 1000 BUS

VEHICLE DETAILS

YEAR: 2010
ENG: 457916U0933478
VIN 1: 9BM634061AB644567
VIN 2:
REG: ZGF356GP
ODO: 1585996
BANK:
ACC: 5000670 - 4923 - SAL051



R260,000

FORCED SALE VALUE EX VAT

CONDITION SUMMARY

TYRES ARE WELL USED. DENTS, STONE CHIPS AND SCRATCHES NOTED ALL ROUND. LIGHTS ARE INTACT. WINDSCREEN IS INTACT. SEATS ARE INTACT. DASHBOARD AND INSTRUMENT CLUSTER IS INTACT. VEHICLE IS IN RUNNING CONDITION. OVERALL CONDITION IS FAIR.



R350,000

MARKET RELATED VALUE EX VAT

MERCEDES BENZ ANDARE MARCOPOLO 1000 BUS

VEHICLE DETAILS

YEAR: 2010
ENG: 457916U0938764
VIN 1: 9BM634061AB679055
VIN 2:
REG: ZBH249GP
ODO: 653487
BANK:
ACC: 5000271 - 4794 - HAR258



R205,000

FORCED SALE VALUE EX VAT

CONDITION SUMMARY

TYRES ARE WELL USED. DENTS, STONE CHIPS AND SCRATCHES NOTED ALL ROUND. LIGHTS ARE INTACT. WINDSCREEN IS INTACT. SEATS ARE INTACT. DASHBOARD AND INSTRUMENT CLUSTER IS INTACT. VEHICLE IS IN RUNNING CONDITION. OVERALL CONDITION IS FAIR.



R290,000

MARKET RELATED VALUE EX VAT

MERCEDES BENZ PARADISO 1200 BUS

VEHICLE DETAILS

YEAR: 2010
ENG: 457916U0939714
VIN 1: 9BM634061AB683069
VIN 2:
REG: ZBL446GP
ODO: 681066
BANK:
ACC: 5000087 - 5529 - DBN001



R475,000

FORCED SALE VALUE EX VAT

CONDITION SUMMARY

TYRES ARE WELL USED. DENTS, STONE CHIPS AND SCRATCHES NOTED ALL ROUND. LIGHTS ARE INTACT. WINDSCREEN IS INTACT. SEATS ARE INTACT. DASHBOARD AND INSTRUMENT CLUSTER IS INTACT. VEHICLE IS IN RUNNING CONDITION. OVERALL CONDITION IS FAIR.



R620,000

MARKET RELATED VALUE EX VAT

MERCEDES BENZ ANDARE MARCOPOLO 1000 BUS

VEHICLE DETAILS

YEAR: 2010
ENG: 467916U0940715
VIN 1: 9BM634061AB686471
VIN 2:
REG: ZGC124GP
ODO: 831882
BANK:
ACC: 5000649 - 4944 - SAL050



R205,000

FORCED SALE VALUE EX VAT

CONDITION SUMMARY

TYRES ARE WELL USED. DENTS, STONE CHIPS AND SCRATCHES NOTED ALL ROUND. LIGHTS ARE INTACT. WINDSCREEN IS INTACT. SEATS ARE INTACT. DASHBOARD AND INSTRUMENT CLUSTER IS INTACT. VEHICLE IS IN RUNNING CONDITION. OVERALL CONDITION IS FAIR.



R287,000

MARKET RELATED VALUE EX VAT

MERCEDES BENZ ANDARE MARCOPOLO 1000 BUS

VEHICLE DETAILS

YEAR: 2010
ENG: 457916U0941065
VIN 1: 9BM634061AB687834
VIN 2:
REG: ZGC338GP
ODO: 508747
BANK:
ACC: 5000653 - 4941 - HAR259



R260,000

FORCED SALE VALUE EX VAT

CONDITION SUMMARY

TYRES ARE WELL USED. DENTS, STONE CHIPS AND SCRATCHES NOTED ALL ROUND. FRONT AND REAR LIGHTS ARE INTACT. WINDSCREEN IS INTACT. SEATS ARE INTACT. DASHBOARD AND INSTRUMENT CLUSTER IS INTACT. VEHICLE IS IN RUNNING CONDITION. OVERALL CONDITION IS FAIR.



R350,000

MARKET RELATED VALUE EX VAT

MERCEDES BENZ PARADISO 1200 BUS

VEHICLE DETAILS

YEAR: 2010
ENG: 457916U0941971
VIN 1: 9BM634061AB693978
VIN 2:
REG: ZGV489GP
ODO: 1368387
BANK:
ACC: 5000742 - 5640 - PRY002



R300,000

FORCED SALE VALUE EX VAT

R 11,975,000

TOTAL FORCED SALE VALUE EX VAT

CONDITION SUMMARY

TYRES ARE WELL USED. DENTS, STONE CHIPS AND SCRATCHES NOTED ALL ROUND. FRONT AND REAR LIGHTS ARE INTACT. WINDSCREEN IS INTACT. SEATS ARE INTACT. DASHBOARD AND INSTRUMENT CLUSTER IS INTACT. VEHICLE IS IN RUNNING CONDITION. OVERALL CONDITION IS FAIR.



R400,000

MARKET RELATED VALUE EX VAT

R15,795,000

TOTAL MARKET RELATED VALUE EX VAT



PARK VILLAGE AUCTIONS

Trusted by banks, respected by buyers

Estate Details

Estate Reference: AUTOPIX PASSANGER SERVICES (SOC)

Address: C/O AUTOPIX PASSENGER SERVICES (SOC), VARIOUS ADDRESSES, CAPE TOWN, HARMONY, SALVOKOP DEPOTS, ETC.

City:

Date: 01 March 2022

Masters / Acc Ref:

Stock Ref:	Qty:	Asset Description	Serial No:	F/S Value
<u>SHONAGUWE</u>				
7007789	1	BROTHER MPC305SPF PRINTER FAX COPIER	W974P700668	100.00
<u>SIBASA</u>				
7007785	1	BROTHER MPC305SPF PRINTER FAX COPIER	W974P700699	100.00
<u>UMJANTSHI</u>				
7005106	1	BINDING MACHINE C340		25.00
7007676, 7007837, 7007842	3	CISCO UC 7692 TELEPHONES	FCH17189C6N, FCH18238Y8W, FCH18239ELO	30.00
14000018	1	COACH MANAGER COMPUTER SOFTWARE		0.00
7002261, 7002270, 7000178, 7001342	4	CPU (INCL KEYBOARD & MONITOR)	CZC04442H6, CZC04442JP, 171282025, CZC9111MFD	3 200.00
7000064	1	FRIDGE		500.00
7005332, 7005333	2	HISENCE DOUBLE DOOR FRIDGE SLV		1 600.00
7005331	1	KIC FRIDGE SCM		800.00
7007974, 7007975	2	HP ELITEBOOK 850 G2	5CG612KT8, 5CG61032RF	2 400.00
7007935	1	HP ELITEBOOK G1	5CG5072581	1 200.00
7007780	1	HP ELITEBOOK REVOLVE 810	2CE41722TT	1 200.00
7005493	1	HP LAPTOP 2170P	2CE24412QW	1 200.00
7005485	1	HP NOTEBOOK 8460p	CZC2282334	1 200.00
7005366	1	HP M575F HR PRINTER		100.00
7007909, 7007910, 7007911, 7007912, 7007913	5	HP PRODECK 600G1 SFF	TRF5040064, TRF504006J, TRF50400D2, TRF504005Q, TRF504005G	3 000.00
7007922, 7007923, 7007925, 7007926	4	HP W2072a 20" LED LCD MONITORS	CNC446NZKT, CNC446NZ75, CNC446NZ6Q, CNC446NZKK	200.00
7002338	1	LAMINATING MACHINE/PAYSLIP SEALER	800124	200.00
7002319, 7002327	2	LAPTOP / NOTEBOOK	CZC124B7HC, CZC14119BR	2 000.00
7007667, 7007684, 7007685	3	HP LAPTOP HP8470P	CNU322BHC8, CNU34BW0D, CNU34BW3T	3 600.00
7007310, 7008200	2	MICROWAVES		500.00
7005359, 7005360, 7005361	3	DEFY MICROWAVES		1 050.00

Stock Ref:	Qty:	Asset Description	Serial No:	F/S Value
7001438	1	OLYMPUS DIGITAL CONFERENCE KIT		25.00
7007902	1	PRINTER FAX COPIER MP C305PF	W795P403096	100.00
7000235, 7000254, 7000255, 7000657	4	LASER PRINTERS	SCNC2750416, SCNC2752055, SCNC2752059	200.00
7001439	1	OKI LASER PRINTER	AF99031014A0	100.00
7007316	1	SHREDDER		50.00
7005475	1	SHREDDER ANTI JAM		50.00
7005511	1	PLASMA TELEVISION SCREEN LCD CEO		500.00
14000019	1	RESERVATIONS / TICKETING COMPUTER SOFTWARE		0.00
		<u>PRETORIA</u>		
7007673, 7007674, 7007677, 7007678, 7007680, 7007681, 7007683, 7007835, 7007836, 7007843	10	CISCO UC 7692 TELEPHONES (HEADSET)	SFCH17169HUV, SFCH17179TTH, SFCH17189CNZ, FCH17169HJH, SFCH17188RDT, SFCH17188SL6, SFCH17189CP1, FCH18239EYQ, FCH18239EWY, FCH18239EDN	100.00
7007710, 7007715, 7007718, 7007730, 7007744, 7007745, 7007746, 7007749	8	EPSON LX 300 II PRINTERS	G8GY785468, G8GY785519, G8GY785494, G8GY785474, G8GY785527, G8GY785534, G8GY785441, G8GY785516	800.00
7007769	1	42" LED SCREENS TV'S	MOO027220	800.00
7007777	1	HP ELITEBOOK 840G1	CNU412BTHF	1 200.00
7007856	1	HP PRODESC 600GI COMPUTER COMPLETE	TRF4140Y2N	800.00
7007883	1	MONITOR LED 20in	CNC402PH3G	50.00
7008002	1	SCALE	AC20140829249	15.00
7008586	1	PRINTER FAX COPIER	W795P403284	100.00
		<u>POLOKWANE</u>		
7007770	1	42" LED SCREENS TV'S	MON124261	800.00
7007377	1	PIGEON HOLE CABINET		100.00
7007558	1	DRAUGHTSMAN CHAIR		100.00
7001264, 7001265, 7001266, 7001267	4	TYPIST CHAIRS		300.00
7007390, 7007391	2	CUPBOARDS		300.00
7007394	1	DESK WITH PEDESTAL		100.00
7007880, 7007881, 7007899	3	MONITORS LED 20in	CNC402PH13, CNC402PJ8S, CNC402PJ8C	150.00
7007978	1	PRINTER SCANNER FAX COPY MPC3055SPF	W796P101867	100.00
3000234, 3000235, 3000236	3	CHUBB SAFES		4 500.00
3000250	1	AUSTIN SAFE		1 500.00
7008003	1	SCALE	AC20140829164	15.00
		<u>PORT ELIZABETH</u>		
7007765	1	42" LED SCREENS TV'S	MOO027240	800.00
7001059, 7001061, 7001063	3	TYPIST CHAIRS		225.00

Stock Ref:	Qty:	Asset Description	Serial No:	F/S Value
7001027, 7001029, 7001030, 7001031, 7001032, 7001033, 7001035, 7001036, 7001037, 7001038, 7001039, 7001040	12	VISITORS CHAIRS		900.00
7000069	1	BAR FRIDGE		350.00
7005490	1	HP NOTEBOOK 8460p	CZC2249FVH	1 200.00
7007983, 7007984	2	PRINTER SCANNER FAX COPY MPC3055SPF	W796P301266, W796P301633	200.00
3000036	1	SAFE OTHER		500.00
7008008, 7008009	2	SCALES	AC20140829128, AC20140829210	40.00
		<u>HAZYVIEW</u>		
7007787	1	BROTHER MPC305SPF PRINTER FAX COPIER	W974P502592	100.00
		<u>MOKOPANE</u>		
3000247, 3000248	2	SAFES OTHER		1 000.00
7007551	1	DESK WITH PEDESTAL		50.00
		<u>NELSPRUIT</u>		
7007407	1	FILING CABINET		200.00
7007408, 7007409, 7007410, 7007412, 7007413, 7007414, 7007415, 7007416, 7007417, 7007418, 7007419, 7007420, 7007421, 7007422	14	MEDIUM BACK CHAIRS		700.00
7000146, 7000147	2	CPU (INCL KEYBOARD)		1 600.00
7007428	1	L-SHAPE DESK		200.00
7008225	1	HP PRINTER FAX COPIER CM 3530MFP	CNFB00877	100.00
3000237	1	CHUBB SAFE		1 500.00
7007429	1	CISCO SWITCH 2800		50.00
11000005	1	TICKET COUNTER HAZEYVIEW (FIXTURE)		0.00
		<u>NZASM PRETORIA</u>		
7005093, 7005096, 7005097, 7005098, 7005099, 7005100, 7005101, 7005102, 7005103, 7005104	10	ALCOBLOW BREATH -A-LYZERS		100.00
7005108, 7005109, 7005110	3	OPTIPLAN CABINETS		1 050.00
7005244, 7005245, 7005247, 7005248, 7005249, 7005250, 7005251, 7005252, 7005253, 7005254, 7005255, 7005257, 7005258, 7005116	13	WOODEN CABINETS		2 600.00

Stock Ref:	Qty:	Asset Description	Serial No:	F/S Value
7005129, 7005139, 7005140, 7005141, 7005142, 7005143, 7005145, 7005147, 7005148, 7005149, 7005150, 7005151, 7005152, 7005153, 7005155, 7005156, 7005157, 7005158, 7005160, 7005161, 7005162, 7005163, 7005123, 7005124, 7005127	25	HIGH BACK CHAIRS		1 875.00
7000841	1	MEDIUM BACK CHAIR		50.00
7005166, 7005167	2	VISITORS CHAIRS		150.00
7007693, 7005241, 7005242, 7005243, 7005363, 7005364, 7005365	7	ROLLER DOOR CREDENZAS		1 050.00
7007163, 7007191	2	WOODEN CUPBOARDS WITH GLASS DOORS		600.00
7007168, 7007169, 7007171, 7007174	4	WOODEN CUPBOARDS		800.00
7000783	1	DESK		100.00
7005259, 7005260, 7005275	3	WOODEN EXECUTIVE DESKS		750.00
7007900	1	HIGH BACK SWIVEL & TILT CHAIR		75.00
7005489	1	HP NOTEBOOK 8460P	CZC22495V6	1 200.00
7007782, 7007790	2	BROTHER MPC305SPF PRINTER FAX COPIER	W974P603448, W974P700812	200.00
7007233	1	MOBILE PEDESTAL		50.00
7007903	1	PRINTER FAX COPIER MP 4503PF	E175J400565	100.00
3000229, 3000230	2	SAFES OTHER		1 000.00
7005466, 7005467, 7005468, 7005469, 7005470, 7005471, 7005471, 7005472, 7005473, 7005474	9	STEEL SHELVING RACKS SCM		1 350.00
7007320	1	FLIPCHART STAND		20.00
7005480	1	COFFEE TABLE ZEN CALL CENTRE		50.00
7005478, 7005479	2	4 SEATER CONFERENCE TABLES		500.00
7007288, 7007291	2	TRAPEZOID TABLES		100.00
7007296, 7007297	2	WOODEN TABLES		150.00
7001261, 7005262, 7005263, 7005264, 7005265, 7005266, 7005267, 7005269, 7005270, 7005271, 7005276, 7005277	12	WORKSTATIONS		2 400.00
7005508, 7005509, 7005510, 7005507	4	CEO WORKSTATIONS		1 200.00

Stock Ref:	Qty:	Asset Description	Serial No:	F/S Value
7005381, 7005382, 7005383, 7005384, 7005385, 7005386, 7005387, 7005388, 7005389, 7005390, 7005391, 7005392, 7005393, 7005394, 7005395, 7005396, 7005397, 7005398, 7005399, 7005400, 7005401, 7005402, 7005403, 7005404, 7005405, 7005406, 7005407, 7005408, 7005409, 7005410, 7005411, 7005412, 7005413, 7005414, 7005415, 7005416, 7005417, 7005418, 7005419, 7005420, 7005421, 7005422, 7005423, 7005424, 7005425, 7005426, 7005427, 7005428, 7005429, 7005430, 7005431, 7005432, 7005433, 7005434, 7005435, 7005436	85	SCREEN CALL CENTRE WORKSTATIONS		17 000.00
7005370, 7005371, 7005373, 7005374, 7005375, 7005376, 7005377, 7005379, 7005380	9	SCREEN WORKSTATIONS SCM		1 800.00
		<u>PARK STATION</u>		
7000072	1	MICROWAVE		300.00
7007767	1	42" LED SCREENS TV'S	M00027869	800.00
3000013	1	MOBILE AIR-CONDITIONER		180.00
7005118, 7005119, 7005120, 7005121	4	WOODEN SWING DOOR CABINETS		800.00
14000020	1	CALL CENTRE COMPUTER SOFTWARE		0.00
7007574, 7007581, 7007582, 7007584, 7007585, 7007586, 7007587, 7007588, 7007589, 7007590, 7007590, 7007591, 7007592, 7007593, 7007594, 7007597, 7007598	16	HIGH BACK DRAUGHTSMAN CHAIRS		1 200.00
7007057, 7007059	2	HIGH BACK SWIVEL & TILT CHAIRS		150.00
7007068, 7007070	2	MEDIUM BACK CHAIRS		150.00

Stock Ref:	Qty:	Asset Description	Serial No:	F/S Value
7005180, 7005181, 7005193, 7005194, 7005196, 7005197, 7005201, 7005210, 7005211, 7005214, 7005216, 7005218, 7005220, 7005223, 7005224, 7005225, 7005228, 7005232, 7005233	19	OPERATOR HIGH BACK CHAIRS		1 425.00
7005179	1	VISITORS CHAIRS		75.00
7005236, 7005237	2	2 SEATER COUCHES		700.00
7002246	1	CPU (INCL KEYBOARD & MONITOR)	CZC04442H0	800.00
7007185	1	WOODEN CUPBOARD WITH GLASS / WOODEN DRS		350.00
7007622, 7007623, 7007624, 7007625, 7007626, 7007627, 7007628, 7007629, 7007630, 7007631	10	DESKTOPS HP8300 SFF NO MONITOR, (INCL KEYBOARD & MONITOR)	CZC3426PTQ, CZC3426PV1, CZC3426PV3, CZC3426PTN, CZC3426PQT, CZC3426PR4, CZC3426PRG, CZC3426PSK, CZC3426PV5, CZC3426PV7	8 000.00
7007602, 7007603	2	FLOOR FANS		100.00
7000058	1	FRIDGE		600.00
3000010, 3000009, 3000012	3	GENERATOR EQUIPMENT (NOT MOBILE)		600.00
7005334, 7005335, 7005336, 7005337, 7005338, 7005339, 7005340, 7005342, 7005343, 7005344, 7005345, 7005346, 7005347, 7005348, 7005349, 7005350, 7005351, 7005352, 7005354, 7005355, 7005356, 7005357, 7005358	23	WOODEN LOCKERS		690.00
7007600	1	VACUUM CLEANER		100.00
7007607, 7007608, 7007609, 7007610, 7007611, 7007612, 7007613, 7007614, 7007615, 7007897	10	MONITORS LED 20in	CNC328PC91, CNC328PC92, CNC328PC93, CNC328PC94, CNC328PCH2, CNC328PCH5, CNC328PCH8, CNC328PCNW, CNC328PCP2, CNC402PHDN	500.00
7008583, 7008585	2	PRINTER FAX COPIERS	E175J500097, W795P403236	200.00
7008004	1	SCALE	AC20140827108	20.00
7001243, 7001244, 7001247, 7001248, 7001255, 7001258	6	WORKSTATIONS		1 200.00

Stock Ref:	Qty:	Asset Description	Serial No:	F/S Value
7005281, 7005282, 7005283, 7005284, 7005285, 7005286, 7005287, 7005288, 7005289, 7005290, 7005291, 7005292, 7005293, 7005294, 7005295, 7005296, 7005297, 7005298, 7005299, 7005300, 7005301, 7005302, 7005303, 7005304, 7005305, 7005306, 7005307, 7005308, 7005309, 7005310, 7005311, 7005312, 7005313, 7005314, 7005315, 7005316, 7005317, 7005318, 7005319, 7005320, 7005321, 7005322, 7005323, 7005324, 7005325, 7005326, 7005327, 7005328, 7005329, 7005330	50	CALL CENTRE WORKSTATIONS		10 000.00
7005278, 7005279, 7005280	3	MANAGER WORKSTATIONS		600.00
		<u>EAST LONDON</u>		
7001096, 7001097	2	TYPIST CHAIRS		150.00
7001069, 7001070, 7001072, 7001073, 7001074, 7001075, 7001076, 7001078, 7001080, 7001081, 7001082, 7001084, 7001085, 7001086, 7001087, 7001088, 7001089, 7001090, 7001091, 7001092	20	VISITORS CHAIRS		1 500.00
7001245	1	WORKSTATION		300.00
		<u>ELIM</u>		
3000251	1	CHUBB SAFE		750.00
7007560, 7007562, 7007565, 7007569, 7007570, 7007571	6	MEDIUM BACK CHAIRS		450.00
7007568	1	HIGH BACK SWIVEL & TILT CHAIR		75.00
7007573	1	WOODEN DESK		100.00
7007979	1	PRINTER SCANNER FAX COPY MPC3055SPF	W796P301025	100.00
		<u>ACORNHOEK</u>		
7007788	1	BROTHER MPC3055SPF PRINTER FAX COPIER	W974P502417	100.00

Stock Ref:	Qty:	Asset Description	Serial No:	F/S Value
<u>BLOEMFONTEIN</u>				
7005743	1	WHITEBOARD		50.00
7005744	1	BOOKCASE		90.00
7005745	1	STATIONERY CABINET		100.00
7005746, 7005747, 7005748	3	CREDENZA		255.00
7005749	1	WOODEN CUPBOARD		200.00
7005750	1	WOODEN CUPBOARD WITH GLASS / WOODEN DRS		300.00
7001130, 7001131, 7001134, 7005752	4	DESKS		400.00
7005751	1	L-SHAPE DESK		200.00
7005754	1	FRIDGE		600.00
7005755	1	HEATER (GAS / ELEC / OIL)		20.00
7005483	1	HP NOTEBOOK 8460p	CZC22525JP	1 200.00
7005756	1	MICROWAVE		300.00
7001137, 7001138	2	MOBILE PEDISTALS		40.00
7005758	1	GOLDAIR RADIO		20.00
3000037	1	AUSTIN SAFE		950.00
7005753	1	COFFEE TABLE		165.00
7000815	1	TELEVISION	42300509	350.00
7005757	1	URN		20.00
<u>BOSMAN STATION</u>				
7008214, 7008215	2	HP PRINTER FAX COPIER CM 3530MFP	CNFND02103, CNFND02173	200.00
<u>KNYSNA</u>				
7007989	1	PRINTER SCANNER FAX COPY MPC3055SPF	W796P301662	100.00
<u>QUEENSTOWN</u>				
7005513	1	NOTICE BOARD		10.00
7005514, 7005515	2	WHITE BOARDS		40.00
7005521, 7005522, 7005523, 7005525, 7005526, 7005527, 7005528, 7005529	8	FILING CABINETS		2 000.00
7005733	1	SERVER CABINET HUB		600.00
7005530, 7005531	2	STATIONERY CABINETS		500.00
7005717, 7005718, 7005719	3	CASH REGISTER DRAWERS		15.00
7005534	1	HIGH BACK CHAIR		75.00
7005538	1	MEDIUM BACK SWIVEL & TILT CHAIR		75.00

Stock Ref:	Qty:	Asset Description	Serial No:	F/S Value
7005539, 7005540, 7005541, 7005542, 7005543, 7005544, 7005545, 7005546, 7005547, 7005548, 7005549, 7005550, 7005551, 7005552, 7005553, 7005554, 7005555, 7005556, 7005557, 7005558, 7005559, 7005560, 7005561, 7005562, 7005563, 7005564, 7005565, 7005566, 7005567, 7005568, 7005569, 7005570, 7005571, 7005572, 7005573, 7005574, 7005575, 7005576, 7005577, 7005578, 7005579, 7005580, 7005581, 7005582, 7005583, 7005584, 7005585, 7005586	48	STEEL CHROME VISITORS CHAIRS		3 600.00
7005519, 7005587	2	TYPIST CHAIRS		150.00
7001041, 7005594, 7005596, 7005597, 7005601, 7005602, 7005604, 7005605, 7005606, 7005607, 7005608	11	VISITOR CHAIRS		825.00
7005609, 7005610, 7005611, 7005612, 7005615, 7005616, 7005617, 7005618, 7005619, 7005620, 7005621, 7005622, 7005623	13	WOODEN CHAIRS		650.00
7005624, 7005625, 7005626, 7005627	4	COUCHES		1 000.00
7005628, 7005632, 7005633, 7005634	4	CREDENZAS		300.00
7005635, 7005636, 7005639, 7005640, 7005641, 7005642, 7005643, 7005644, 7005645	9	WOODEN CUPBOARDS		1 440.00
7005647, 7005648	2	WOODEN CUPBOARD WITH GLASS / WOODEN DRS		500.00
7005649	1	DESK COMPUTER		800.00
7005650	1	L-SHAPE DESK		200.00

Stock Ref:	Qty:	Asset Description	Serial No:	F/S Value
7005651, 7005653, 7005654, 7005656, 7005657, 7005658, 7005659, 7005660, 7005661	9	DESKS WITH PEDESTALS		765.00
7005662, 7005664, 7005665, 7005666, 7005668, 7005669	6	WOODEN DESKS		600.00
7005720	1	DESK FAN		10.00
7005722	1	FRIDGE		600.00
7005723	1	BAR FRIDGE		350.00
7005725	1	MICROWAVE		300.00
7005517, 7005518	2	NOTICE BOARDS		10.00
3000154, 3000155	2	PA CONTROL CENTRE (AMPLIFIERS ETC)		100.00
7005516	1	PARTITION		10.00
7005670	1	MOBILE PEDESTAL		50.00
7005735, 7005736, 7005737, 7005739, 7005740	5	ROUTERS		25.00
3000156, 3000157, 3000158	3	SAFES OTHER		1 350.00
3000159, 3000160, 3000161, 3000162, 3000163, 3000164, 3000165, 3000166, 3000167, 3000168, 3000169, 3000170	12	AUSTIN SAFES		11 400.00
7005672, 7005673	2	SHELVING/RACK (STATIONERY)		300.00
7005674, 7005675	2	LARGE WOODEN CLOTHING STANDS		50.00
7005687	1	PRINTER STAND		10.00
7005732	1	SIGN TRANSLUX ELECTRIC STAND		10.00
7005741, 7005742	2	SWITCHES		40.00
7005699, 7005700, 7005701, 7005702, 7005703, 7005704, 7005705, 7005706	8	COFFEE TABLES		800.00
7005708	1	CONFRENCE TABLE		200.00
7005709, 7005710	2	TELEPHONE TABLES		100.00
7005712, 7005713, 7005714, 7005715	4	WOODEN TABLES		400.00
7005512	1	UPS		20.00
7005716	1	WALL UNIT		150.00
		<u>KING WILLIAMS TOWN</u>		
7001067	1	TYPIST CHAIR		75.00
		<u>GEORGE</u>		
7001065, 7001066	2	TYPIST CHAIRS		150.00
7001451	1	EPSON PRINTER	1YVY097833	100.00
7007986	1	PRINTER SCANNER FAX COPY MPC3055SPF	W796P300949	100.00
		<u>DURBAN</u>		
7007766	1	42" LED SCREENS TV'S	M00027221	800.00

Stock Ref:	Qty:	Asset Description	Serial No:	F/S Value
3000011, 3000014, 3000015	3	MOBILE AIR-CONDITIONERS	PIDX5000191\D	300.00
7007328	1	DRAWING BOARD		20.00
7007329, 7007330	2	WHITE BOARDS		40.00
7007331, 7007332, 7007333	3	FILING CABINETS		600.00
7007334	1	METAL / STEEL CABINET		250.00
7007335	1	PIGEON HOLE CABINET		100.00
7007336	1	HIGH BACK SWIVEL & TILT CHAIR		75.00
7007337	1	MEDIUM BACK SWIVEL & TILT CHAIR		75.00
7005186, 7005189	2	OPERATOR HIGH BACK CHAIRS		150.00
7007338, 7007339, 7007340, 7007341, 7007342, 7007343, 7007344, 7007345, 7007346, 7007347, 7007348, 7007349, 7007350, 7007351	14	STEEL CHAIRS		700.00
7001142, 7001143, 7001144, 7001145, 7001147, 7001148, 7001149, 7001150	8	TYPIST CHAIRS		600.00
7001117, 7001118, 7001119, 7001120, 7001121, 7001122, 7001133, 7001141, 7007352, 7007353, 7007354, 7007355, 7007356, 7007357	14	VISITOR CHAIRS		1 050.00
7007358	1	COUCH		200.00
7007359	1	ROLLER DOOR CUPBOARD		50.00
7007360	1	WOODEN CUPBOARD		200.00
7008253	1	DELL LATTITUDE 5590	FQ296S2	1 000.00
7007373	1	BAR FRIDGE		350.00
7008238	1	HP PRINTER FAX COPIER CM 3530MFP	CNFND02649	100.00
7007361, 7007362, 7007363	3	METAL / STEEL LOCKERS		150.00
7007374	1	MICROWAVE		300.00
7001406	1	MONITOR	CNC939RDX3	50.00
7000362, 7000366	2	NETWORK SERVERS		50.00
3000232	1	PA CONTROL CENTRE (AMPLIFIERS ETC)		20.00
3000233	1	SAFE OTHER		500.00
7008006	1	SCALE	AC20140824090	20.00
7007375	1	HI-FI SYSTEM		50.00
7007364	1	COFFEE TABLE		50.00
7007365, 7007366	2	CONFERENCE TABLES		300.00
7007367, 7007368	2	HEXAGON TABLES		200.00
7007369, 7007370, 7007371, 7007372	4	WOODEN TABLES		400.00
		CAPE TOWN		

Stock Ref:	Qty:	Asset Description	Serial No:	F/S Value
7007437, 7007438, 7007439, 7007440, 7007441, 7007442, 7007443, 7007444, 7007445, 7007446, 7007447, 7007448, 7007449, 7007450	14	WORK BENCHESWITH VICES		3 500.00
7007436	1	WHITE BOARD		20.00
7007452	1	BOOKCASE		100.00
6000024	1	BRAKE TESTER EQUIPMENT		200.00
7007454, 7007455	2	FILING CABINET		500.00
7007456	1	OPTIPLAN CABINET		300.00
3000000	1	CONTAINER		0.00
7007460, 7007461, 7007462, 7007463, 7007464, 7007465, 7007466, 7007468, 7007470, 7007472	10	STATIONERY CABINETS		2 500.00
7007474	1	WOODEN CABINET		200.00
7005126, 7007478, 7007479,	3	HIGH BACK SWIVEL & TILT CHAIRS		225.00
7007480	1	MEDIUM BACK SWIVEL & TILT CHAIR		75.00
7007481	1	RELAX CHAIR		75.00
7007482	1	WOODEN CHAIR		50.00
7001299	1	CPU (INCL KEYBOARD & MONITOR)	CZC9111MK3	800.00
7007488, 7007489, 7007490, 7007493	4	CREDENZAS		300.00
7007496, 7007498, 7007499, 7007500	4	WOODEN CUPBOARDS		800.00
7007501, 7007502	2	WOODEN CUPBOARDS WITH GLASS / WOODEN DOORS		500.00
7007505, 7007506, 7007507, 7007509, 7007510, 7007511, 7007513	7	DESKS WITH PEDESTALS		1 050.00
7007515, 7007516, 7007517, 7007518	4	WOODEN DESKS		400.00

Stock Ref:	Qty:	Asset Description	Serial No:	F/S Value
7002414, 7002415, 7002416, 7002417, 7002418, 7002419, 7002420, 7002421, 7002422, 7002423, 7002424, 7002426, 7002427, 7002428, 7002429, 7002430, 7002431, 7002432, 7002433, 7002434, 7002435, 7002436, 7002437, 7002438, 7002439, 7002440, 7002441, 7002442, 7002453, 7002455, 7002456, 7002474, 7002480, 7002481, 7002485, 7002488, 7002489, 7002496, 7002498, 7002505, 7002507, 7002508, 7002509, 7002511, 7002512, 7002515, 7002516, 7002517, 7002525, 7002528, 7002531, 7002532, 7002535, 7002537, 7002539, 7002540	63	FUEL E-TAGS	MJP630W, MHW149W, MJY543W, MJC429W, MKX161W, MRZ990W, MRM515W, MRX773W, MJR756W, MRW403W, MHY771W, MNC494W, MNC494W, MSF159W, MJS035W, MJR511W, MJR511W, MSX649W, MSZ285W, MTB695W, MSV066W, MSZ323W, MJS036W, MSW326W, MSK698W, MSW334W, MLF689W, MRY917W, MFK894W, MDF012W, MDF128W, MFP428W, MJN956W, MHL372W, MFP013W, MDF915W, MFN749W, MDF094W, MDR590W, MFN747W, MFT364W, MGT762W, MHV481W, MHN944W, MHS043W, MJJ973W, MKC106W, MJJ971W, MJJ972W, MDL864W, MDH349W, MJJ765W, MCM122W, MKY036W, MKY022W, MII974W	0.00
7008243, 7008244	2	HP PRINTER FAX COPIER CM 4540F MFP	JPBVC5905V, JPBVC5905Z	200.00
3000238, 3000239	2	HYDRAULIC PRESS		600.00
3000240	1	ALLUMINIUM LADDER		250.00
7007666	1	HP8470P LAPTOP	CNU322BHG1	1 000.00
7007520, 7007521, 7007522, 7007523	4	METAL / STEEL LOCKERS		200.00
6000169	1	BENDING MACHINE		2 000.00
6000170	1	CIRCULAR SAW		800.00
6000171	1	BENCH GRINDER		250.00
7002342	1	HIGH PRESURE HOSE		50.00
6000172	1	WELDING MACHINE		2 000.00
7001414	1	MONITOR	CNC939RDXD	50.00
7008266, 7008267, 7008268, 7008269, 7008271, 7008281, 7008283, 7008284, 7008285, 7008287, 7008289, 7008291, 7008292, 7008419	14	ON BOARD CAMERAS		0.00
7000816	1	OVERHEAD PROJECTOR		100.00
7007433	1	PRINTER		100.00
7007987, 7007988, 7007992	3	PRINTER SCANNER FAX COPY MPC3055SPF	W796P300905, W796P301693, E176M330453	300.00
3000245	1	AUSTIN SAFES		950.00
6000173, 6000174	2	STEEL SHEARS		200.00

Stock Ref:	Qty:	Asset Description	Serial No:	F/S Value
7007527, 7007528, 7007529, 7007530	4	STEEL SHELVING		600.00
7007537	1	SHELVING/RACK (STATIONERY)		100.00
7007545	1	FLIPCHART STAND		20.00
7000811	1	RECTANGULAR TABLE		100.00
7007543, 7007544	2	TRAPEZOID TABLES		200.00
7008423, 7008424, 7008425, 7008426, 7008428, 7008438, 7008440, 7008441, 7008442, 7008444, 7008446, 7008448, 7008449, 7008576	14	TRACKING DEVICES & BRACKETS		0.00
		<u>SALVOKOP</u>		
7000067	1	MICROWAVE		300.00
7000672	1	SCALE		20.00
3000007	1	MOBILE AIR-CONDITIONER		50.00
7007947, 7007948, 7007949, 7007950, 7007951, 7007952, 7007953, 7007954, 7007955, 7007956, 7007957, 7007958, 7007959, 7007960, 7007961, 7007962	16	BED BASE & MATTRESSES		2 400.00
7005771, 7005772, 7005773, 7005774, 7005775, 7005776, 7005777, 7005778, 7005779, 7005780, 7005781, 7005782, 7005783, 7005784, 7005785, 7005786, 7005787, 7005788	18	WOODEN BEDS		1 800.00
7005761, 7005762, 7005763, 7005764, 7005765	5	WOODEN BENCHES		500.00
7005800, 7005801, 7005802, 7005803, 7005804	5	WORK BENCHES		1 000.00
7005818	1	WORK BENCH WITH VICE		200.00
7005851	1	BOOKCASE		50.00
6000034	1	BRAKE TESTER EQUIPMENT		150.00
7005855, 7007013, 7007016, 7007017	4	FILING CABINETS		800.00
7007007, 7007009	2	HUB CABINETS		200.00
7005868, 7005872, 7007023, 7007025, 7007031, 7007033, 7007034	7	OPTIPLAN CABINETS		1 540.00
7007048	1	HIGH BACK SWIVEL & TILT CHAIR		75.00
7005991, 7007080	2	MEDIUM BACK CHAIRS		150.00

Stock Ref:	Qty:	Asset Description	Serial No:	F/S Value
7000942, 7001280, 7001281, 7001282	4	OPERATOR CHAIRS		300.00
7000858, 7000860, 7000861, 7000862, 7000863, 7000864, 7000865, 7000866, 7000867, 7000868, 7000870, 7000871, 7000894, 7000905, 7000906, 7000915, 7000916, 7000917, 7000918, 7000919, 7000920, 7000921, 7000922, 7000923, 7000924, 7000925, 7001209, 7001211, 7001212, 7001218, 7001221	31	VISITORS CHAIRS		2 325.00
7007672, 7007831, 7007832, 7007838, 7007839, 7007840, 7007841	7	CISCO UC 7692 TELEPHONE	SFCH17168217	70.00
3000003	1	CONTAINER		0.00
3000019	1	COMPRESSOR EQUIPMENT		500.00
7008202, 7008204	2	CPU (INCL KEYBOARD & MONITOR)	TRF5040087, TRF504005S	1 600.00
7008580, 7000153, 7000310, 7000311, 7001330, 7001331, 7001348, 7001349, 7001356	9	CPU (INCL KEYBOARD & MONITOR)	TRF504005S, CZC9111M0F, CZC9111MFP, CZC9111M5X, CZC9111M3Y, CZC9111MF5	7 200.00
7007148	1	CREDENZA		100.00
7006086, 7006088, 7006089, 7006090, 7006091, 7006092, 7006095, 7006096, 7006097, 7006095, 7006096, 7006097, 7006098, 7006099, 7006100, 7006102, 7007154, 7007156	15	CUPBOARDS		2 250.00
7007160	1	GLASS WOODEN DOORS CUPBAORDS		250.00
7006162, 7006183, 7006184, 7007165, 7007173, 7007175, 7007180, 7007181, 7007182	9	WOODEN CUPBOARDS		1 350.00
7007187	1	WOODEN CUPBOARDS WITH GLASS / WOODEN DOORS		250.00
7007194	1	DESK COMPUTER		800.00
7006199, 7007205, 7007210	3	DESKS WITH PEDESTALS		225.00

Stock Ref:	Qty:	Asset Description	Serial No:	F/S Value
7007638, 7007640, 7007641, 7007642, 7007644, 7007645, 7007646, 7007648, 7007649, 7007651	10	HP6300 DESKTOP SFF NO MONITOR	TFR31901YN	3 000.00
7006909	1	CHEST FREEZER		350.00
7000060, 7007946	2	FRIDGES		1 600.00
7002371, 7002373, 7002376, 7002379, 7002395, 7002398, 7002400, 7002403, 7002407, 7002411, 7002444, 7002445, 7002446, 7002447, 7002448, 7002449, 7002450, 7002451, 7002452, 7002454, 7002457, 7002459, 7002460, 7002462, 7002463, 7002464, 7002465, 7002466, 7002467, 7002469, 7002473, 7002475, 7002483, 7002499, 7002500, 7002501, 7002503, 7002510, 7002513, 7002519, 7002520, 7002521, 7002522, 7002523, 7002524, 7002526, 7002527, 7002529, 7002530,	49	FUEL E-TAGS	MNX142W, MRL730W, MRL738W, MRC805W, MRS128W, MSX644W, MSC321W, MPF959W, MRN946W, MRS127W, MFY987W, MFY933W, MFY934W, MHK969W, MHH979W, MDF032W, MDF098W, MKW797W, MDF098W, MDF584W, MDF127W, MDF918W, MDF124W, MDH444W, MDF184W, MDG131W, MDF078W, MDG787W, MDH708W, MDH686W, MDP957W, MDG078W, MFN746W, MDH350W, MKC111W, MDF185W, MDF185W, MDL859W, MFP008W, MHP509W, MHZ130W, MND830W, MFV951W, MMZ090W, MFP429W, MGY602W, MGS452W, MJS040W, MNW162W	0.00

Stock Ref:	Qty:	Asset Description	Serial No:	F/S Value
7002538, 7002543, 7002546, 7002548, 7002549, 7002550, 7002553, 7002559, 7002578, 7002587, 7002596, 7002603, 7002605, 7002614, 7002616, 7002618, 7002621, 7002635, 7002639, 7002644, 7002646, 7002652, 7002654, 7002655, 7002663, 7002667, 7002675, 7002677, 7002678, 7002682, 7002683, 7002689, 7002701, 7002703, 7002704, 7002706, 7002708, 7002715, 7002717, 7002723, 7002728, 7002729, 7002735, 7002740, 7002741, 7002744, 7002745, 7002746, 7002749, 7002756, 7002760, 7002777, 7002784, 7002788, 7002790, 7002793	65	FUEL E-TAGS	MHP418W, MHP510W, MJB543W, MDH352W, MHZ139W, MHY769W, MPY121W, MJJ763W, MHZ905W, MJY545W, MRK545W, MJY546W, MLJ560W, MHW151W, MJJ779W, MNJ342W, MLP866W, MLT068W, MNN536W, MKY997W, MKC102W, MJJ783W, MJC431W, MLJ063W, MMS305W, MNB446W, MPF252W, MPP984W, MRL741W, MRL732W, MNS977W, MJZ237W, MRS249W, MMT390W, MPH127W, MST252W, MSX168W, MPD220W, MNX138W, MNG817W, MNC497W, MJC828W, MJY549W, MPF999W, MPS278W, MPV910W, MPX383W, MPP698W, MNX036W, MPV915W, MPN892W, MRW405W, MPJ100W, MRL743W, MEK850W, MND011W	0.00
3000006	1	GENERATOR EQUIPMENT (NOT MOBILE)		0.00
7007756, 7007757, 7007758	3	KEVLAR BODY ARMOUR VEST		0.00
3000198, 3000199, 3000200	3	ALLUMINIUM LADDERS		0.00
7006264, 7006265, 7006266, 7006267, 7006268, 7006269, 7006270, 7006271, 7006272, 7006273, 7006274, 7006275, 7006276, 7006277, 7006278, 7006279, 7006280, 7006281, 7006282, 7006283, 7006284, 7006285, 7006286, 7006287, 7006288, 7006289, 7006290, 7006291, 7006292, 7006293, 7006294, 7006295, 7006296, 7006297, 7006298, 7006299, 7006300, 7006301, 7006302, 7006303	40	METAL / STEEL LOCKERS		2 000.00

Stock Ref:	Qty:	Asset Description	Serial No:	F/S Value
7006304, 7006305, 7006306, 7006307, 7006308, 7006309, 7006310, 7006311, 7006312, 7006313, 7006314, 7006315, 7006316, 7006317, 7006319, 7006320, 7006322, 7006323, 7006324, 7006325, 7006326, 7006327, 7006328, 7006329, 7006330, 7006331, 7006332, 7006333, 7006334, 7006335, 7006336, 7006337, 7006338, 7006339, 7006752, 7006753, 7006754, 7006757, 7006758, 7006759, 7006760, 7006761, 7006762	43	METAL / STEEL LOCKERS		2 150.00
7008207, 7007654, 7007655, 7007656, 7007657, 7007658, 7007659, 7007660, 7007661, 7007665	10	MONITORS LED 20in	CNC249PZKV, CNC249PZQ3, CNC249PZQ7, CNC249PZQC, CNC249Q062, CNC249QQY, CNC249Q0R2, CNC249Q0SL, CNC249Q12P	500.00
7008270, 7008272, 7008273, 7008274, 7008275, 7008276, 7008277, 7008278, 7008279, 7008280, 7008282, 7008286, 7008288, 7008290, 7008293, 7008298, 7008305, 7008309, 7008311, 7008313, 7008314, 7008317, 7008318, 7008321, 7008324, 7008329, 7008332, 7008333, 7008341, 7008350, 7008356, 7008358, 7008359, 7008365, 7008368, 7008370, 7008371, 7008372, 7008373, 7008374, 7008375, 7008376	42	ON BOARD CAMERAS		0.00

Stock Ref:	Qty:	Asset Description	Serial No:	F/S Value
7008377, 7008378, 7008379, 7008380, 7008381, 7008382, 7008383, 7008384, 7008385, 7008386, 7008387, 7008388, 7008389, 7008390, 7008391, 7008392, 7008393, 7008394, 7008395, 7008396, 7008397, 7008398, 7008399, 7008400, 7008401, 7008402, 7008403, 7008404, 7008405, 7008406, 7008407, 7008410, 7008411, 7008412, 7008413, 7008414, 7008415, 7008416, 7008417, 7008418, 7008420, 7008421	42	ON BOARD CAMERAS		0.00
7007234, 7007236, 7007237	3	MOBILE PEDESTALS		60.00
7001461, 7001462, 7001463	3	EPSON PRINTERS	1YVY097833	300.00
7000238, 7000245	2	LASER PRINTERS	SCNC2750799, SCNC2751897	200.00
7008201	1	PRINTER SCANNER FAX COPY	W795P403414	100.00
7008001	1	PRINTER SCANNER FAX COPY MPC4503SP	E175M630575	100.00
3000218, 3000219, 3000220, 3000221	4	CHUBB SAFES		3 800.00
3000225	1	AUSTIN SAFES		950.00
6000165	1	SPOT LIGHT ADJUSTER		20.00
7001433	1	STEEL STATIONERY CUPBOARD 1800X900		250.00
7007963	1	TABLE		100.00
7007259	1	BOARDROOM TABLE		350.00
7006809	1	COFFEE TABLE		100.00
7007269	1	ROUND TABLE		100.00
7006844	1	TELEPHONE TABLE		50.00
7007300	1	WOODEN TABLEW		100.00

Stock Ref:	Qty:	Asset Description	Serial No:	F/S Value
7008427, 7008429, 7008430, 7008431, 7008432, 7008433, 7008434, 7008435, 7008436, 7008437, 7008439, 7008443, 7008445, 7008447, 7008450, 7008455, 7008462, 7008466, 7008468, 7008470, 7008471, 7008474, 7008475, 7008478, 7008481, 7008486, 7008489, 7008490, 7008498, 7008507, 7008513, 7008515, 7008516, 7008522, 7008525, 7008527, 7008528, 7008529, 7008530, 7008531, 7008532, 7008533, 7008534, 7008535,	44	TRACKING DEVICES & BRACKETS		0.00
7008536, 7008537, 7008538, 7008539, 7008540, 7008541, 7008542, 7008543, 7008544, 7008545, 7008546, 7008547, 7008548, 7008549, 7008550, 7008551, 7008552, 7008553, 7008554, 7008555, 7008556, 7008557, 7008558, 7008559, 7008560, 7008561, 7008562, 7008563, 7008564, 7008567, 7008568, 7008569, 7008570, 7008571, 7008572, 7008573, 7008574, 7008575, 7008577, 7008578	40	TRACKING DEVICES & BRACKETS		0.00
7007945	1	TV PLASMA SCREEN LCD		150.00
6000107	1	VEHICLE DIAGNOSTIC MACHINE		0.00
7001246, 7001256, 7001260, 7007302, 7007303, 7007304	6	WORKSTATIONS		1 200.00
3000001	1	ZOZO OFFICE ACCOMMODATION		0.00
		<u>HARMONY</u>		
6000006	1	BEND FOLD MACHINE		150.00
6000000	1	COLUMN LIFT		1 500.00
6000012	1	FILT CLEANER		0.00
3000004	1	GHRIES NETWORK		0.00

Stock Ref:	Qty:	Asset Description	Serial No:	F/S Value
6000007	1	GUILLOTINE		3 000.00
6000013	1	HYDRAULIC PRESS		1 000.00
6000008	1	METALCUTTER		500.00
7000055, 7000056, 7000057, 7000061, 7000071	5	MICROWAVES		1 500.00
3000005	1	OIL NETWORK		0.00
7000059	1	OVEN GAS/ELEC/DIESEL		200.00
6000017	1	STEAM CLEANER		100.00
6000002	1	TESTBENCH		0.00
7007763	1	42" LED SCREENS TV'S	M00027196	800.00
6000004, 6000005	2	AIR DRIER		700.00
6000016	1	AIR RECEIVER		800.00
6000110, 6000111, 6000112	3	BATTERY CHARGER		450.00
7005789, 7005790, 7005791	3	WOODEN BEDS		300.00
7005792	1	STEEL BENCH		150.00
7005806, 7005807, 7005808, 7005809, 7005810, 7005811, 7005812, 7005813, 7005814, 7005815, 7005816, 7005817	12	WORK BENCHES		2 400.00
7005820, 7005821, 7005822, 7005823, 7005824, 7005825, 7005826, 7005827, 7005828, 7005829, 7005830, 7005831, 7005832, 7005833, 7005834, 7005835, 7005836, 7005837, 7005838, 7005839, 7005840, 7005841, 7005842, 7005843, 7005844, 7005845, 7005846	27	WORK BENCHES WITH VICE		6 750.00
7005847, 7005848, 7005849	1	BOOK RACK / SHELF		100.00
6000027	1	BRAKE TESTER EQUIPMENT		0.00
7008261, 7008262	2	BRUSH CUTTER		400.00
6000104	1	BUS DIAGNOSTIC MACHINE		0.00
7005857, 7005858, 7005859, 7005860, 7005861, 7005862, 7005863, 7007453	8	FILING CABINETS		1 600.00
7007008, 7007547	2	HUB CABINETS		100.00
7005865, 7005866	2	METAL / STEEL CABINETS		500.00
7005873, 7005875, 7005876	3	OPTIPLAN CABINETS		900.00

Stock Ref:	Qty:	Asset Description	Serial No:	F/S Value
7005877, 7005879, 7005880, 7005881, 7005882, 7005883, 7005884, 7005885	8	PIGEON HOLE CABINETS		400.00
7007457, 7007458	2	STATIONERY CABINETS		500.00
7005895	1	WOODEN CABINET		200.00
7000788, 7000789	2	ARM CHAIRS		150.00
7001199, 7001200, 7001201	3	DRAUGHTSMAN CHAIRS		225.00
7000790	1	HIGH BACK CHAIR		75.00
7005911, 7005912, 7005913, 7005914, 7005915, 7005916, 7005917, 7005918, 7005919, 7005920, 7005921, 7005922, 7005923, 7005924, 7005927, 7005928, 7005929, 7005930, 7005931, 7005932, 7005933, 7005934, 7005935, 7005936, 7005937, 7005938, 7005939, 7005940, 7005941, 7005942, 7005943, 7005944, 7005945, 7005946, 7005947, 7005948, 7005949, 7005950, 7005951, 7005952, 7007056	42	HIGH BACK SWIVEL & TILT CHAIRS		3 150.00
7000787, 7005958, 7005959, 7005960	4	MEDIUM BACK SWIVEL & TILT CHAIRS		300.00

Stock Ref:	Qty:	Asset Description	Serial No:	F/S Value
7005962, 7005963, 7005964, 7005965, 7005966, 7005967, 7005968, 7005969, 7005970, 7005971, 7005972, 7005973, 7005974, 7005975, 7005976, 7005977, 7005978, 7005979, 7005980, 7005981, 7005982, 7005983, 7005984, 7005985, 7005986, 7005987, 7005988, 7005989, 7005993, 7005994, 7005995, 7005998, 7005999, 7006000, 7006002, 7006003, 7006004, 7006005, 7006006, 7006007, 7006008, 7006009, 7006010, 7006011, 7006012, 7006013, 7006014, 7006015, 7006016, 7006017, 7006018, 7006019, 7006020, 7007108	54	MEDIUM BACK CHAIRS		4 050.00
7006024	1	PLASTIC CHAIR		25.00
7006025, 7006026, 7006027, 7006028, 7006029, 7006030, 7006030, 7006031, 7006032, 7006033, 7006034, 7006035, 7006037, 7006039, 7006041, 7006042, 7006043, 7006044, 7006045, 7006046, 7006047, 7006048, 7006049, 7006050, 7006051, 7006052, 7006053, 7006055	27	STACKABLE CHAIRS		945.00
7000780, 7000781, 7000782	3	SWIVEL CHAIRS		225.00
7000856, 7000857, 7001018, 7001019, 7001020, 7001021, 7001022, 7001023, 7001024, 7001227, 7001229	11	TYPIST CHAIRS		825.00

Stock Ref:	Qty:	Asset Description	Serial No:	F/S Value
7000877, 7000883, 7000884, 7000887, 7000888, 7000889, 7000890, 7000893, 7000998, 7000999, 7001000, 7001001, 7001010, 7001011, 7001012, 7001013, 7001014, 7001015, 7001016	19	VISITOR CHAIRS		1 425.00
7006897	1	COFFEE MACHINE		50.00
6000001, 6000015, 6000026, 6000176	4	COMPRESSOR EQUIPMENT		2 000.00
11000006	1	COMPRESSOR HOUSING CONSTRUCTION		0.00
7006064, 7006065	2	COUCHES		400.00
7002245, 7002262, 7008581, 7000219, 7001304, 7001305, 7001310, 7001353, 7001357	9	CPU (INCL KEYBOARD & MONITOR)	CZC04442HH, CZC0445WH2, TRF504006M, CZC9111MKV, CZC9111MD5, CZC9111MK9, CZC9111MFR	7 200.00
7006073, 7006074, 7006075, 7006076, 7006077, 7006078, 7006079, 7006080, 7006081, 7006082, 7007484, 7007485, 7007486, 7007487	14	CREDENZAS		1 400.00
7006106, 7006107, 7006108, 7006109, 7006110, 7006111, 7006112, 7006113, 7006114, 7006115, 7006116, 7006117, 7006118, 7006119, 7006120, 7006121, 7006122, 7006123, 7006124, 7006125, 7006126, 7006127, 7006128, 7006129, 7006130, 7006131, 7006132, 7006133, 7006134, 7006135, 7006136, 7006137, 7006138, 7006139, 7006140, 7006141, 7006142, 7006143, 7006144, 7006145, 7006146, 7006147, 7006148, 7006149, 7006150, 7006151, 7006152, 7006153, 7006154, 7006155, 7006156, 7007159	52	CUPBOARDS		10 400.00
7006161	1	ROLLER DOOR CUPBOARD		100.00

Stock Ref:	Qty:	Asset Description	Serial No:	F/S Value
7006169, 7006170, 7006171, 7006172, 7006173, 7006174, 7006175, 7006176, 7006177, 7006178, 7006179, 7006180, 7006181, 7006182, 7007495	15	WOODEN CUPBOARDS		3 000.00
7006187, 7006188, 7006189, 7006190, 7006191, 7006192, 7006193, 7006194, 7006195	9	WOODEN CUPBOARDS WITH GLASS / WOODEN DOORS		2 250.00
7000822, 7001276	2	DESKS		300.00
7006196, 7006197, 7006198	3	DESK COMPUTERS		300.00
7000785, 7000786, 7001277, 7007201	4	L-SHAPE DESKS		800.00
7006212, 7006213, 7006214, 7006215, 7006216, 7006217, 7006218, 7006219, 7006220, 7006221, 7006222, 7006223, 7006224, 7006226, 7006228, 7006229, 7006230, 7006231, 7006232, 7006233, 7006234, 7006235, 7006236, 7006237, 7006238, 7006239, 7006240, 7006241, 7006242, 7007503, 7007504	31	DESKS WITH PEDESTALS		4 650.00
7006252, 7006253, 7006254, 7006255, 7006256, 7006257, 7006258, 7006259, 7006260, 7006261, 7007514	11	WOODEN DESKS		1 100.00
7006898, 7006899, 7006900, 7006901, 7006902, 7006903, 7006904, 7006905, 7006906, 7006907, 7006908	11	FAN DESKS		220.00
7006908	1	FRIDGE		600.00
7006908, 7006908	2	BAR FRIDGES		700.00

Stock Ref:	Qty:	Asset Description	Serial No:	F/S Value
7006908	20	FUEL E-TAGS	MRK783W, MRN016W, MRJ785W, MRJ787W, MRJ788W, MRB326W, MRJ783W, MPT117W, MRN014W, MRK787W, MRL740W, MRC344W, MRK785W, MRN015W, MRL731W, MRB202W, MRK782W, MRL908W, MRJ781W, MSV063W	0.00
7006908	20	FUEL E-TAGS	MRN947W, MSV064W, MRP044W, MNJ330W, MSS772W, MRN950W, MSX643W, MRS248W, MSX658W, MSK456W, MRN948W, MTG801W, RJN550V, MDF126W, MDH439W, MDH683W, MLR178W, MLR179W, MHL361W, MHL354W	0.00
7006908	20	FUEL E-TAGS	MJJ965W, MJN955W, MDG785W, MFP430W, MFN748W, MDF056W, MFN737W, MLZ139W, MHL348W, MFP012W, MHW556W, MFV943W, MFP010W, MFP498W, MHZ131W, MHW148W, MFP706W, MFP703W, MFP431W, MLK377W	0.00
7006908	20	FUEL E-TAGS	MKY057W, MLJ563W, MKX941W, MKX947W, MPY891W, MJC823W, MJM711W, MKT862W, MJZ235W, MJJ784W, MKX932W, MKB761W, MKX235W, MKX120W, MKX160W, MPY903W, MJC826W, MPY895W, MRG631W, MNJ582W	0.00
7006908	20	FUEL E-TAGS	MKZ151W, MLJ559W, MLL158W, MNJ708W, MMS310W, MMS304W, MLT069W, MLT070W, MLL160W, MLP119W, MRJ065W, MKC104W, MJR510W, MKY059W, MJY533W, MPT282W, MJY534W, MPF986W, MKX166W, MPF980W	0.00

Stock Ref:	Qty:	Asset Description	Serial No:	F/S Value
7006908	20	FUEL E-TAGS	MKX936W, MPF987W, MGF692W, MDG119W, MNC499W, MKX935W, MKY863W, MKY866W, MLP120W, MLP759W, MNN532W, MMS303W, MMX102W, MNB448W, MRY257W, MLJ066W, MLD530W, MLD528W, MLD421W, MLJ562W	0.00
7006908	20	FUEL E-TAGS	MNJ581W, MNS978W, MKZ000W, MRM516W, MKY998W, MKY865W, MKX121W, MKY864W, MNN533W, MRM514W, MLD419W, MKL404W, MKX944W, MJJ785W, MKX942W, MNX103W, MMX103W, MLB766W, MLP868W, MNC500W	0.00
7006908	20	FUEL E-TAGS	MNJ334W, MNJ711W, MNJ712W, MNN530W, MNN534W, MNX051W, MPF958W, MPP701W, MPT112W, MPP986W, MPV611W, MRW453W, MRX930W, MRX986W, MRM074W, MPY899W, MRW406W, MLF504W, MRM076W, MLP864W	0.00
7006908	20	FUEL E-TAGS	MRG299W, MMX104W, MPV612W, MNB450W, MLH266W, MNG818W, MNG820W, MLB767W, MNJ340W, MKZ150W, MKX948W, MNB447W, MPF957W, MPC713W, MNX104W, MNX043W, MNJ338W, MNJ337W, MNG819W, MND012W	0.00
7006908	20	FUEL E-TAGS	MHY772W, MHY773W, MJC432W, MJC827W, MJK112W, MJP631W, MJY542W, MPT131W, MPT113W, MPS281W, MPS282W, MTZ031W, MPJ223W, MPM206W, MPT114W, MPX788W, MPN071W, MPN071W, MPH131W, MPH130W	0.00

Stock Ref:	Qty:	Asset Description	Serial No:	F/S Value
7006908	20	FUEL E-TAGS	MPL138W, MPF961W, MPJ101W, MRL736W, MRG993W, MRL737W, MRT261W, MPL134W, MSC312W, MSC758W, MSF416W, MPV914W, MPJ112W, MSH028W, MSF145W, MSK458W, MSF137W, MSC319W, MRY913W, MRY918W	0.00
7006908	23	FUEL E-TAGS	MRZ988W, MRN353W, MRS253W, MRL739W, MND010W, MSS601W, MRW404W, MPM204W, MNJ336W, MSS602W, MSW319W, MSH054W, MSX667W, MSS606W, MSW362W, MRB746W, MLD420W, MLC409W,, MJY547W, MHW152W, MTB698W, MRW407W, MRS247W	0.00
7006908	3	GENERATOR EQUIPMENT (NOT MOBILE)		0.00
7006908	12	HEATERS (GAS / ELEC / OIL)		600.00
7006908	1	HP ELITEBOOK 850 G2	5CG5520VNK	800.00
7006908	1	HP PRINTER FAX COPIER CM 3530MFP	CNFND02480	100.00
7006908	2	HP PRINTER FAX COPIER CM 4540F MFP	JPBVC5905F, JPBVC5K0HJ	200.00
7006908	1	HP PRINTER FAX COPIER CM 6030F MFP	JPBT95GGBT	100.00
7006908	12	HP PRODESC 600GI (INCL KEYBOARD & MONITOR)	TRF4140Y1V, TRF4140XBK, TRF4140Y1X, TRF414006S, TRF4140XGH, TRF4140Y30, TRF4140XFN, TRF4140XCF, TRF4140XCH, TRF4140X9H, TRF4140Y2S, TRF4140Y3J	9 600.00
7006908	1	HP W2072a 20" LED LCD MONITOR	CNC446NYXD	50.00
7006908	1	HYDPRESS		1 000.00
7006908	2	HYDRAULIC JACKS		360.00
7006908	5	ALLUMINIUM LADDERS		1 250.00
7006908	1	LAPTOP / NOTEBOOK	CZC0461SV6	1 000.00
7006908	1	LAWNMOWER		200.00
7006908	3	LIFTS		4 500.00
7006908	411	METAL / STEEL LOCKERS		20 550.00
7006908	1	CHAIN SAW		150.00
7006908	1	DVD PLAYER		50.00
7006908	1	GRINDER		50.00
7006908	1	HIGH PRESSURE CLEANER		150.00
7006908	3	VACUUM CLEANERS		150.00
7006908	1	WASHING MACHINE		350.00
7006908	1	WELDING MACHINE		1 500.00









